

Notable Chess Victories Of Women Over Men

QUEENS OVER KINGS

IN THIS SPECIAL FEATURE WE HIGHLIGHT THE POWER AND BRILLIANCE OF WOMEN'S CHESS WITH GAMES WHERE THEY OUTPLAYED — AND OUTSMARTED — THEIR RENOWNED MALE OPPONENTS.



Organized women's chess has come a long way. Back in 1897 there was held the First International Ladies Chess Congress, with an American, Mrs. Harriet Worrall of Brooklyn coming in a strong second place. Before that, the only American woman of note was the remarkable Mrs. Ellen Gilbert, who became known as the Queen of Chess and achieved much notoriety by beating the heavily favored G.H.D. Gossip with a clean 4-0 score in their matchup in the U.S. team contest with our British cousins. Thus, the woman beating a man chess player barrier was broken earlier. Even Mrs. Worrall was reported to have drawn a game with Morphy.

Gossip was no grandmaster, though, so we had to wait for the universally celebrated Vera Menchik and her very special club. Her victory over soon-to-be world champion Max Euwe really cemented her status and her talent. She also toppled Reshevsky and others, and her tragic death from a buzz bomb in World War II left chess in mourning. There was no immediate successor.

CHINA TAKES OVER THE REIGN FROM THE SOVIET UNION

After World War II, the Soviet Union directed a portion of the energies of the state into making chess its national game and propaganda vehicle. The Soviet women dominated the world championships until 1991 when Xie Jun



▲ Garry Kasparov vs. Judit Polgar, Linares 2001

of China toppled Maia Chiburdanidze, who had reigned for thirteen years and had succeeded Nona Gaprindashvili who had held the title for 16 years. China, from the 1990s to today, became the dominant force, with brief interruptions from S. Polgar, Alexandra Kosteniuk and two Ukrainians – Anna Ushenina and Mariya Muzychuk.

Gaprindashvili had demonstrated she could beat a GM by defeating Roman Dzindzichashvili at Wijk aan Zee in 1979 while Chiburdanidze knocked off Bent Larsen at Vienna in 1993, who also lost to Xie Jun at Monaco in 1994.

THE FABULOUS POLGAR SISTERS

Then, along came the Polgars... Judit would become a top ten in the world player with a rating over 2700. Garry Kasparov was an early skeptic: "She has fantastic chess talent, but she is, after all, a woman. It all comes down to the imperfections of the feminine psyche. No woman can sustain a prolonged

Chess Knows No Gender

Although it's better now than when my sisters and I started competing, chess is still a male-dominated world. Even today, women make up no more than ten percent of players in an average tournament. The difference is that by now, men have gotten used to losing to us and come up with fewer excuses! Since I started playing in mixed events from an early age, it always felt natural to be one of the few girls around. From the start, it was clear to me that there are good moves and bad moves on the chessboard, and that has nothing to do with age or gender. I still believe that being a boy or a girl is irrelevant when it comes to becoming a strong chess player. There are many qualities needed to excel in chess, but most of all, you need to be a fighter and have persistence – both in studying and in competing.

Fighting spirit is an individual trait. From what I've seen in tournaments, women want to win (and hate losing) just as much as any man. If you consider motherly instincts, I don't think girls are any less of fighters – we may simply choose to fight for different causes than boys do.



▲ Polgar sisters - Judit, Susan and Sofia.

Sofia Polgar

battle." Shades of Bobby Fischer, who had come up with this gem for all time: "Women are weakies. I can give knight odds to any woman in the world. To Nona even, a knight!" Tal had the best reply to that *faux pas*: "Fischer is Fischer, but a knight is a knight!"

Later, Fischer would actually befriend the Polgars and spend a good deal of time with them, and Kasparov, after a few unfortunate experiences, showed

significant growth in this area: "The Polgars showed that there are no inherent limitations to their aptitude – an idea that many male players refused to accept until they had unceremoniously been crushed by a twelve-year-old with a ponytail."

Fourteen-year-old Sofia won a tournament in Rome that had grandmasters in it with a phenomenal 8½/9 score and a 2900 performance rating. During the mentioned Fischer

visit four years later, she even managed to win three games at FischerRandom with the inventor.

Susan became a grandmaster and reigned as women's world champion from 1996-1999. Her later years were highlighted by her college coaching and development of women's chess.

AMERICAN WOMEN ALSO BEAT SOME STRONG MALE GMS

American tournaments have not been without male GM defeats. In 2004, at the U.S. Championship in San Diego, Anna Zatonskih defeated Alexander Shabalov, and in 2011, Irina Krush, who is a grandmaster, knocked off fellow GM Liviu Dieter Nisipeanu at the Gibraltar Masters in 2011 in a very nice game we have here. At present, we have Carissa Yip on the rise and she was also able to beat a strong GM in an open tournament as presented in the selection that follows.

Although we picked some highlights, have no doubts about it, the chessboards of the world are littered with the broken lances of the male knights of chess at the hands of women. Our Managing Editor, Dusan Kronic, has picked some of his favorites out of many candidates. If you have one that isn't here, send it along with your thoughts. In the meantime, have fun with these gems.

Pete Tamburro, Senior Editor

A Project Revisited

Somewhere around 2015-2016, the team that today publishes American Chess Magazine, and at that time was running Chess Informant, began working on a project showcasing the most notable victories of women over men. The idea was entrusted to two great female players, Ketevan Arakhamia-Grant and Alisa Maric, together with German journalist Harald Fietz. They passionately collected games, gained the support of fellow chess legends, compared different eras, and delved deeply into this fascinating subject.

The article in this issue offers only a glimpse of that work. Some of the annotations presented here were originally created for that book, which, like many publishing ventures, has not yet reached the finish line. In publishing this is common: what appears in print is often just the tip of the iceberg, with countless ideas and ongoing projects beneath the surface.

With this special theme in ACM #46, I hope to rekindle the enthusiasm to one day bring such a book to life, filled with truly great games. Speaking personally, and setting aside broader debates about gender equality in chess, I remain a devoted admirer of women's creativity at the chessboard. I am convinced that such a book would inspire new generations and become a must-have for every aspiring young girl who dreams of making her mark in the chess world.

Josip Asik, Editor-in-Chief

21 Xie Jun

21 LANDMARK VICTORIES
QUEENS OVER KINGS

BO8

Xie Jun	2515
Bent Larsen	2560

Monaco 1994
Notes by Xie Jun

From 1992, the “female stars vs. the veteran men” tournament began to be held. Each team had five players with the female team formed of world champions, top-rated players and outstanding new faces of the year, while the players in the men’s team had to be over 50 years of age, and all of them at least once had to have entered world championship candidates match cycle. The following game was played in Monaco, 1994.

1.e4 g6 2.d4 3.♗g7 3.♗c3 c6 4.♗f3 d6 5.h3 Against an experienced lineup of predecessors, the smartest opening choice is one that is quite regular and dependable. Never even consider choosing a forgotten or obscure opening – those old masters have already seen everything that can happen on the 64-square board. I opted for the most solid variation. The main reason behind this decision was my opponent’s style – it’s no secret that he prefers sharp, tactical lines. So, why not just play some simple, clean chess? No need to rush; just wait patiently and let the game unfold.

Of course, there are alternative ways to continue, where White can aim for a small but lasting advantage after 5.♗e2 ♗f6 6.0-0 0-0 7.a4 ♗bd7 8.a5 ♗c7 9.♗e3 ♗b8 10.h3 b5 11.axb6 axb6 12.d5 ♗b7 13.♗d4 ♗a8.

Also, 5.♗e3 ♗f6 6.♗d2 b5 7.♗d3 ♗bd7 8.♗h6 0-0 9.♗xg7 ♗xg7 10.e5 dxe5 11.dxe5 ♗g4 12.♗g5 ♗c5 13.♗d1 ♗c7 14.0-0; and the line of 5.♗c4 ♗f6 6.e5 dxe5 7.♗xe5 0-0 8.0-0 ♗bd7 9.♗g5 ♗b6 10.♗b3 a5 11.a4 ♗bd5 12.♗f3 ♗e6 will lead game to an equal position.

5...♗f6 6.a4 0-0 6...a5 is not a good try, White can answer with 7.♗e2 0-0 8.0-0 ♗a6 9.♗e3 ♗b4 10.♗d2 d5 11.e5 ♗e8 12.♗a2 ♗xa2 13.♗xa2 f6 14.f4, obtaining an initiative on the kingside.

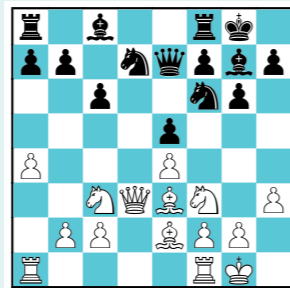
7.♗e3 ♗bd7 8.♗e2 e5 9.dxe5!? I didn’t like 9.0-0 exd4 (Black is not ready for the immediate 9...d5, as after 10.exd5 e4

Xie Jun (born 1970 in Baoding) is a trailblazing Chinese Grandmaster and Women’s World Champion. She became the first Asian woman to win the title in 1991, defeating Maia Chiburdanidze and ending decades of Soviet dominance. Xie defended her crown in 1993, lost it in 1996, but returned to win it again in 1999 and successfully defended it in the first knock-out World Championship in 2000. Awarded the GM title in 1994, she was the sixth woman ever to achieve it and the first from Asia.



A national hero in China, her optimistic, attacking style helped popularize chess across Asia. Inducted into the World Chess Hall of Fame in 2019, she later became President of the Chinese Chess Association and a longtime advocate for the sport.

11.♗d2 cxd5 12.♗b5! (Δ♗d6) 12...♗e8 13.c3 White will play the pawn to a5, and queen to b3, with easy play on the queenside.) 10.♗xd4 ♗e8 11.♗d3 ♗c5 White’s e4 pawn will become a target. **9...dxe5 10.0-0 ♗e7 11.♗d3!** White’s queen will find a good square on c4.



11...a5 If Black goes 11...♗c5, then White can obtain the more harmonious piece play after 12.♗c4 ♗a6 13.♗b3 ♗e6 14.♗c4 ♗xc4 15.♗xc4 ♗fd8 16.♗fd1. **12.♗c4 ♗e8!?** Putting the rook on e8 has little meaning in this position. Black

should have played 12...♗h5 aiming for ...♗f4, and with the support of ...♗f6. In this regard, White should reply 13.♗fd1 ♗f4 14.♗f1 ♗f6 15.♗xf4 ♗xf4 16.♗d2 with an open d-file and better position.

13.♗fd1 h6?! Black should consider 13...♗h5. After 14.♗d2 ♗f4 15.♗ad1 ♗f8 16.♗c5 ♗f6 17.♗b3 White obtains a slightly better position.

14.♗d2 With the idea of ♗a2, followed by ♗c4.

14...♗h7? Wrong! Black should always put the knight on h5 – sooner or later. Here, Black should have played 14...♗b4 trying to exert some pressure on the queenside.

15.♗b3 ♗g5 15...♗b4 was needed. After 16.♗c4 ♗e7 17.♗a2 ♗xb3 18.♗xb3 White achieves a slight advantage in the endgame.

16.♗c4± The b6 and d6 squares are very attractive for White’s knight. Black’s pieces have been greatly restricted.

16...♗c5?? Losing patience, this premature counterattack can only make things worse.

The right move for Black is 16...♗e6, intending ...♗d4. After 17.♗d6 ♗d4 18.♗xd4 exd4 (If 18...♗xd6 19.♗e3 ♗b4 20.♗c4 ♗xb3 21.♗xb3 ♗f8 22.♗d2 White obtains an ideal game.) 19.♗xe8 ♗xe8 20.♗b1 ♗xe4 21.♗d3 ♗e7 22.♗d2 White takes control over the queenside.

17.♗a3 ♗ce6 17...♗ge6 also does not work, as after 18.♗g4 ♗d4 19.♗xc8 ♗axc8 20.♗d2, White has the easier play.

20 Nana Dzagnidze

21 LANDMARK VICTORIES
QUEENS OVER KINGS

E11

Krishnan Sasikiran	2690
Nana Dzagnidze	2550

Gibraltar 2011
Notes by Nana Dzagnidze

I played this game in the last round of the Gibraltar festival 2011. It was a very important game for me.

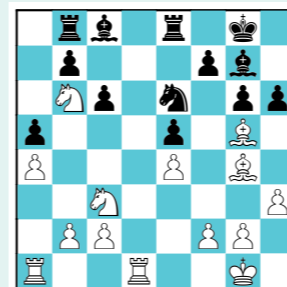
1.d4 ♗f6 2.c4 e6 3.g3 d5 4.♗g2 ♗b4+ 5.♗d2 ♗e7 6.♗f3 One of the modern variations of the Catalan Opening.

6...0-0 7.0-0 c6 Restricting the range of White’s light-squared bishop and preparing the fianchetto of the bishop on b7 or a6.

8.♗c2 b6 9.♗d1 Quite a popular variation of the Bogo-Indian Defense.

9...a5 A rare move. Usually played is 9...♗bd7 10.♗f4 ♗b7 11.♗c3 dxc4 12.♗d2 ♗d5 13.♗xc4 ♗xf4 14.gxf4 ♗c7 15.e3 with complicated play, where White has a space advantage, however Black’s position is solid enough.

18.♗xe7 ♗xe7 19.♗b6 ♗b8 20.♗g4 ♗e8 21.♗xg5!



White’s main idea is how to make the Black pieces stuffy in their “nest”.

21...hxg5 22.♗b1! With every turn, White wants to place this knight on c4.

22...♗f8 23.♗d2 ♗c5 24.♗dc4 ♗xb6 25.♗xb6+- ♗f8 26.♗d2 ♗e7 27.♗ad1 ♗f8 28.♗xc8+ ♗fxc8 29.♗d7+ ♗f6 After 29...♗f8 30.♗xe6 fxe6 31.♗h7, White’s rooks will dominate the seventh rank wreaking havoc.

30.♗xe6 fxe6 31.g4! With the idea of ♗1d3-f3, and an unstoppable checkmate. **Black** stopped the clock and **resigned**.



Nana Dzagnidze (born 1987 in Kutaisi) is a Georgian Grandmaster, awarded the GM title in 2008. A standout from youth, she won the Girls U-12 World Championship in 1999 and the Girls U-20 in 2003. She led Georgia to team gold at the 2008 Olympiad and the 2015 World Team Championship, and earned individual gold on Board 1 at Tromso in 2014. Individually, she claimed the 2017 European Women’s Championship and the 2017 Women’s World Blitz title. Dzagnidze also shared first place at the 2020 Lausanne Women’s Grand Prix. With a peak rating of 2573, she remains one of the world’s top female players

10.♗f4 ♗a6 11.♗bd2 b5 12.c5 12.cxd5 cxd5 13.♗c7 ♗c8 14.♗dc1 b4 15.e4 ♗b5 16.♗e5 a4 with counterplay.

12...b4 13.♗e1 13.e4 ♗xe4 14.♗xe4 dxe4 15.♗xe4 ♗c4 16.♗e5 ♗d5.

13...♗h5 14.♗xb8 Otherwise Black would have time to play ...f5 herself.

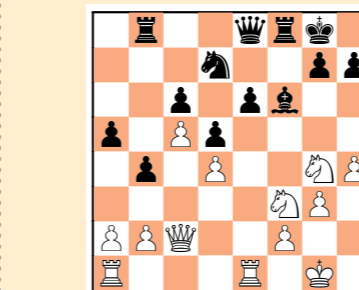
14...♗xb8 15.e4 ♗f6 16.e5 Better was 16.♗e5 ♗c7 17.exd5 cxd5 (17...♗xd5 18.♗dc4 ♗fd8 19.♗h3±)

16...♗d7 17.♗f1 ♗c8 18.h4 The start of unprepared aggression that only weakens White’s position. Better was 18.♗d3.

18...♗xf1 19.♗xf1 f6 A timely break which restricts White’s attack. It stops ♗g5.

20.exf6 ♗xf6 21.♗e3 21.♗xe6 ♗xc5 22.♗e2 ♗e4=.

21...♗e8 22.♗g4



22...♗h5 Black herself starts an attack on the kingside.

23.♗fe5 23.♗xf6+ ♗xf6 24.♗g5 ♗f8=.

23...♗xe5 24.♗xe5 ♗xe5 25.♗xe5 ♗g4 The pawn weakness on e6 is compensated

by White’s pawn weakness on d4. For this reason I assess the position as equal, with dynamic possibilities.

26.♗d1 ♗f3 27.♗e3 ♗bf8 28.♗e2 h5! 29.♗xf3 ♗xf3 30.♗e1 ♗f6 31.♗d2 ♗f7 My opponent was trying to win this position, but I think he overestimated his chances.

32.a3?! bxa3 33.bxa3 a4! Now the d4 pawn looks much weaker than the e6 pawn.

34.♗b2 ♗f3 35.♗b7+ ♗g6 36.♗g2 Through inertia White is continuing to play for a win and with every move worsens his position. 36.♗d7=.

36...♗f5 37.♗b2 ♗b3 38.♗c1? The decisive mistake.

38...♗d3 By means of consistent and strong play, Black gains the advantage.

39.♗b1 ♗h7 40.♗b2 40.♗e5 ♗xg3+-.

40...♗f3+ 41.♗g1 ♗xa3 42.♗b1+ ♗d3 43.♗c2 a3 44.♗h2 ♗g8 45.♗b1 ♗f7 45...g5!! is the computer’s suggestion.

46.hxg5 h4 47.gxh4 ♗e4! 48.♗c1 ♗xh4+ 49.♗g1 ♗g4+ 50.♗f1 a2 51.♗b8+ ♗g7 52.♗b7+ ♗g6+-.

46.♗e1 ♗b3 47.♗xe6 ♗xe6 48.♗g6+ ♗e7 49.♗xg7+ ♗d8 50.♗h8+ ♗d7 51.♗g7+ ♗c8 **White resigned**

Victory in this game was tremendously exciting for me. As a result, I won the Ladies’ first prize and overall shared 5th place together with Fabiano Caruana, Francisco Vallejo Pons and Pentala Harikrishna.

19 Sofia Polgar

21 LANDMARK VICTORIES
QUEENS OVER KINGS

B85

Sofia Polgar	2295
Alex Chernin	2580

Roma 1989

Notes by Sofia Polgar

The most memorable achievement of my chess career was winning the Magistrale di Roma in 1989. At the time, my performance rating of over 2900 set a record in chess history for an open tournament. Chess magazines around the world featured my photo on their front covers with titles like “The Sack of Rome” or “Miracle in Rome.” Many of my opponents were respected grandmasters, three or four times my age. Grandmaster Vladimir Palatnik, a strong Soviet player, became my first “GM victim,” followed by Chernin, Suba, and Razuvayev. Dolmatov was the one to “save the honors” in the final round, holding me to a draw – the only game I didn’t win in the tournament.

The funny thing is, I didn’t even realize how well I was doing until after the seventh round! It was a good thing I approached the event move by move, game by game, without worrying about results or who was sitting across from me. The final score was an outstanding 8½ out of 9. I’ve had a few other results in my career that I’m proud of, but nothing comes close to Rome.

The following game was played in Round 5. At the time, I was rated almost 300 points lower than my opponent, Alexander Chernin, who was known as one of the world’s strongest French Defense specialists. I was only 14 years old and had already won my first four games. To my surprise, Chernin opened with the Sicilian, clearly trying to take me out of preparation right from move one. Little did he know that of all openings, the Sicilian was where I felt most comfortable.

1.e4 c5 2.♟f3 e6 3.d4 cxd4 4.♞xd4 ♟c6 5.♟c3 ♞c7 6.♙e2 ♟f6 7.0-0 ♙e7 8.♙e3 0-0 9.f4 d6 This is the Scheveningen Variation. If you weren’t born in Holland, don’t even try to pronounce it! White’s main plan in this setup is to advance the e- and f- pawns, followed by a kingside attack.

10.♞h1 Once f4 is played, it’s useful to

Sofia Polgar (born 1974 in Budapest) is a Hungarian-Israeli International Master (1990) and Woman Grandmaster, best known for her sensational performance at the 1989 Rome Open – scoring 8½/9 with a 2879 performance rating, an all-time record at an open event. As one of the famed Polgar sisters, she earned gold medals at the 1988 and 1990 Women’s Chess Olympiads, along with individual board medals.

After retiring from competitive play, she embraced her passion for art and illustration, publishing her memoir *Amazing Artist - Dangerous Tactician*, blending her tactical chess legacy with colorful artworks.



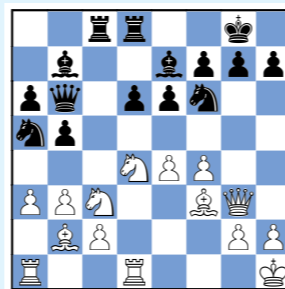
a pawn for the initiative with 15...e5! 16.♙xc4! (16.fxe5 dxe5 17.♙h6? ♞h5! 18.♙xh5 ♞xh6++) 16...bxc4 17.fxe5 dxe5 18.♞xe5 ♙e8 19.♞g3 ♙d6 with compensation for the pawn.

16.b3 ♞a5 Now the knight is kicked back to the rim...

17.♙f3 ♙ac8 Best would be getting the knight back to the game with 17...♟c6.

18.♙b2 Now all White’s pieces are developed in harmony; there are tactics in the air. With the bishop on the long diagonal, “only” the knights prevent a devastating attack on g7 against the black king. Chernin totally missed the following combination.

18...♙fd8? 18...♙fe8!? would be better. In this kind of setup the best placement of the rooks is usually c8 and e8. It’s easy to see why having a rook on the semi-open c-file is good. Having a rook on the e8 is good, particularly when the e-file opens up after Black’s ...d6-d5 break and an exchange of e-pawns. Sometimes this move only gives space for the bishop to retreat to f8 for kingside defense.



19.♞d5! This is a typical Sicilian sacrifice, exploiting the weakness of the e6

have the king out of the a7-g1 diagonal, to avoid unpleasant surprises. For example: 10.♞e1 ♞xd4! 11.♙xd4 e5! 12.fxe5 dxe5 13.♞g3 This is a nice trick with a pin against the e5 pawn, but now Black has a counterpin with 13...♙c5! 14.♙xc5 ♞xc5+ and White doesn’t have the time to capture the knight on f6, because of the check.

10...a6 Preparing ...b5. Black wants to play in the center against the e4 pawn and break with ...d5, as well as play on the c-file. For all these plans, chasing the knight from c3 with ...b5-b4 is very useful.

11.♞e1 Transferring the queen to the kingside.

11...♞a5?! More experienced players in the Sicilian prefer taking 11...♞xd4!?

12.♙xd4 b5!.

12.♞g3?! I was eager to have my queen on the attack. But it was better to get the rook out of the corner first with 12.♙d1!.

12...♟c4 With a double attack on bishop and pawn, the bishop is forced back to the starting position.

13.♙c1 My idea was to bring the bishop back to the game from the other side and to the long diagonal after b2-b3.

13...b5 14.a3 ♞b6?! 15.♙d1 ♙b7? Black’s next move is logical, since it continues development and attacks the center, but it’s too slow.

Black’s best chance was to sacrifice

pawn. The e6 pawn is overloaded, it can’t control both f5 and d5 squares at the same time. One of White’s knights is off the long diagonal now!

19...♞xd5 Accepting the knight sacrifice 19...exd5 would weaken the kingside too much after 20.♞f5, with a fork on the bishop and g7 with mating threat. The bishop retreat with 20...♙f8 is the only move to hold on to both bishop and the g7 pawn, but this leaves the f6 knight undefended. 21.♞xg7 This is the most brutal way to continue the attack against the king. 21...♙xg7 22.♙xf6 Due to the pin on the g-file, there’s no way to stop the queen from chasing the king into mate. For example: 22...♙f8 23.♞xg7+ ♙e8 24.♞g8+ ♙d7 25.♞xf7+ ♙c6 26.exd5+ ♙c5 27.♙d4 mate; 19...♙xd5 20.exd5+-.

20.♞xe6! Now all three knights are out of the way of the long diagonal, and on top of the mating threat on g7, the rook on d8 is also attacked.

20...g6 Escaping the mate for now, we see why ...♙fd8 was so costly for Black on move 18.

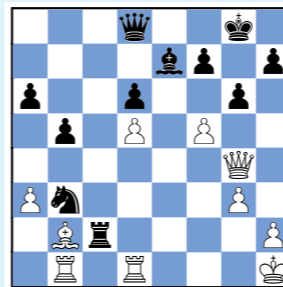
21.♞xd8 ♞xd8 22.exd5 After all the trades over the last few moves, White is up an exchange.

22...♙xc2 23.♙ab1 This move is tricky. The rook defends the bishop and also sets a trap and defends the pawn on b3.

23...♙h4 Taking the pawn would lose material after 23...♞xb3? 24.♙e4 with a discovered attack on the knight and rook.

24.♞h3 ♙c8! 25.♙g4 ♙g4 26.♞xg4 ♞xb3 27.g3?! 27.f5 was a better way to continue. Weakening the pawn structure around the king has its dangers here, too.

27...♙e7 28.f5?! Better was 28.♞f3.



28...a5? This was the last mistake in the game. Black would have had some drawing chances after 28...♞c8! 29.♞e4 ♞xf5 30.♞xf5 gxf5. The black rook on the second rank is very powerful and provides compensation for the exchange.

29.fxg6 hxg6 30.♞h3! The bishop is just too strong now, threatening mate in one.

18 Antoaneta Stefanova



Antoaneta Stefanova (born 1979 in Sofia) is a Bulgarian Grandmaster and Women’s World Chess Champion from 2004 to 2006. She began playing at age 4 under her father’s guidance, won the Girls U-10 World Youth title in 1989, and became European U-14 champion in 1992. Stefanova earned the Grandmaster title in 2002 (the ninth woman ever to do so) following her victory in the European Women’s Championship in 2002.

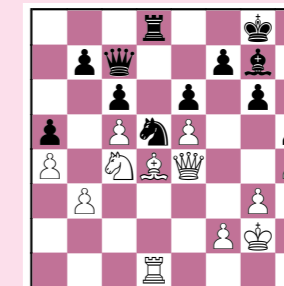
She also won the 2012 Women’s World Rapid Championship and numerous elite tournaments, consistently competing at the highest levels – including many mixed “open” events.

D77

Antoaneta Stefanova	2516
Radoslaw Wojtaszek	2723

Gibraltar 2013

1.d4 ♟f6 2.c4 g6 3.g3 ♙g7 4.♙g2 d5 5.♟f3 0-0 6.0-0 dxc4 7.♞a3 ♟c6 8.♞xc4 ♙e6 9.b3 ♙d5 10.♙b2 a5 11.a4 ♟b4 12.e3 e6 12...♙e4 13.♞e1 ♙xg2 14.♞xg2 ♟d7 15.e4 e6 16.♞e2±; 12...c6 13.♞e2 ♙e4 14.♞e1 ♙xg2 15.♞xg2 b5 16.♞e5±. 13.♞e2 ♙e4 14.♞e1 ♙xg2 15.♞xg2 15.♞xg2 ♞e7 16.♙fd1 ♙fd8 17.♙ac1 ♟d7 18.♟f4 c6 19.♙a3 ♞19.♟d3 ♞xd3 20.♙xd3 ♟f6 21.e4±. 19...♙f8 19...e5 20.dxe5 ♞xe5 21.h4±. 20.♙b2 ♙db8 21.e4± ♙e8 22.♞f3 ♙g7 23.e5 ♙ed8 24.♟d3 ♙f8 25.♟c5?! 25.♙a3 ♞e8 26.♙xb4 axb4 27.h4±. 25...♞xc5 26.dxc5 ♙xd1+?! 26...♞xc5! 27.♟d6 ♙xd6 28.♙xc5 ♙xc5∞. 27.♙xd1 ♟d5 28.♙d4 ♙g7 29.h4 h5 30.♟g2 ♞c7 31.♞e4 ♙d8



32.♙d3! ♙h6 33.♙f3 ♟e7 34.♙c3 ♙d5 35.♙xa5 ♞b8 36.♙c3 ♟f5 37.♟b6+- ♙d1 38.♙d3 ♙c1 39.♙d2 39.♟d7 ♞a8 40.♟f6+ ♟g7 41.♞e2+- 39...♙xd2 40.♙xd2 ♟g7 41.♞f4 ♙b1 42.♟c4! ♙xb3 43.♞g5 ♙f8 44.♞f6+ ♟h7 45.♙d7 ♟h6 46.♟d2 Black resigned

30...♙xb2 If 30...♙f6 31.♙xf6 ♞xf6 after 32.♙xb3 the rook protects the f3 square and White is a full rook up now.

31.♙xb2 a4 32.♙f2 ♟c5 33.♙df1 Doubling the rooks maximizes their strength.

33...f5 34.g4! After opening the files on the kingside there’s no defense.

34...♟e4 35.♙g2 ♙f6 When making this move, Black’s flag fell, which means he lost on time. The position is totally lost after 36.gxf5, as White is too far ahead in material and the black king has no escape.

Black resigned

17 Anna Zatonskih

21 LANDMARK VICTORIES QUEENS OVER KINGS

CO2

Alexander Shabalov	2608
Anna Zatonskih	2440

U.S. Championship, San Diego 2004
Notes by Anna Zatonskih

I would like to share a game that holds a particularly special place in my heart – a game I remember above all others. In 2002, after immigrating to the USA, I began balancing my own tournament play with coaching. I often used the games of World Champions as teaching material for my students. Most of my pupils were children under the age of ten, and I would frequently ask them: “Can you name the chess World Champions?”

Of course, in America, every child knows that Bobby Fischer was a World Champion. Many of them also mentioned Josh Waitzkin, one of the main characters in the popular Hollywood movie *Searching for Bobby Fischer*, which nearly every young chess player had seen. They would name a few other champions as well, but Fischer and Waitzkin were always among their first answers.

Interestingly, while I was teaching in 2003-2004, the name Alexander Shabalov also started appearing in their responses. At that time, Shabalov’s name was resonating across the entire U.S. chess scene. Not only was he a multiple-time U.S. Champion, but he had also won one major international open after another. His reputation was so prominent that some even believed he was a World Champion. For these reasons, the following game holds great significance for me, and it was especially satisfying to come out victorious.

In the 2004 U.S. Championship, we faced each other in the first round. Alexander Shabalov was the reigning American Champion. From a creative standpoint, I was very pleased with how I managed to defend a difficult position in that game. Finding accurate moves in a passive setup is never simple, as every inaccurate decision can be fatal. Yet, I was able to demonstrate stubborn resistance in defense and, eventually, even managed to turn the tables and win.

1.e4 e6 2.d4 d5 3.e5 c5 4.c3 I have been playing the French Defense from the start of my career. Apart from ... b6 I also played ... c6 .

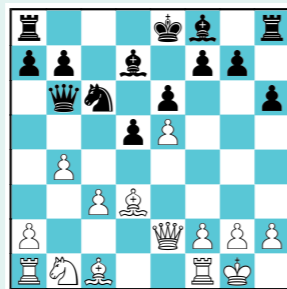
4... b6 5. d3 6. d3 cxd4 7. dxd4 Upon 7.cxd4 b5 , Black manages a desirable piece trade. Of course, White still has a space advantage, but it is nice to exchange such an active White piece as a bishop on d3 to my passive “French bishop”.

7... e7 The main continuation is 7... c6

8. dxc6 bxc6 (8... xc6).

8.0-0 dxc6 9. dxc6 dxc6 10. e2 h6 10... c7 11.f4 c5+ 12. h1 0-0 13. d2 f5 14.b4 b6 15.a4± was J.Willemze 2422 - M.De Jong 2319, Amsterdam 2004, which White won on move 90.

11.b4 Now my bishop will not manage to occupy an active position on c5. I will also miss out on the counterplay connected with ...a5-a4 and hope of exchanging the dark-squared bishops. On the other hand White has created a weakness on c3, a potential target... But, first of all, Black should avoid getting mated.



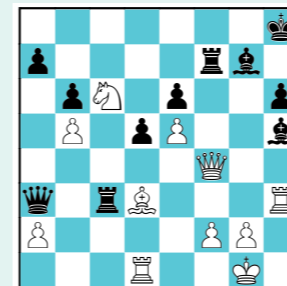
11...g6 Here I was already spending a lot of time. The development of the dark-squared bishop on e7 would leave my kingside completely unprotected. That is why I decided to fianchetto my bishop. **12. d2 g7 13. d3 c7 14. e1 e7** Bringing the knight closer for the defense of the kingside and attacking the c3 pawn.



Anna Zatonskih (born 1978 in Mariupol) is a Ukrainian-American chess International Master (2004) and Woman Grandmaster (1999). She won the Ukrainian Women’s Championship in 2001 before moving to the United States.

In the U.S., she secured four national titles (2006, 2008, 2009, 2011) and has been a key member of the U.S. Women’s Olympiad team since 2004, earning multiple team and individual medals, including an individual gold on board one in 2008. Her peak FIDE rating was 2537 in May 2011. In 2023, Anna convincingly won the third edition of the prestigious Cairns Cup held in Saint Louis.

15. e3 0-0 Originally I was planning to play 15... f5 16. xf5 gxf5 17. c5 but having considered the emerging position longer, it seemed too passive for me 17... f8 Now or later Black has to exchange the c5 bishop. Otherwise, it would be impossible to do anything. **16. d2 h7 17. c5 fe8 18.h4 d8** It was better to play b6 directly. If d6 then after a queen retreat Black threatens to play f5 attacking the bishop on d6. **18...b6 19. d6 b7 .** **19.h5 b6 20. xe7 xe7** Here White could have won a pawn.



21. f4 I think that this is stronger than the following variation: 21.hxg6+ fxg6 22. c2 e8 23. h4 c8 24. xg6+ g8 25. ac1 (25. xe8 xe8 26. f3 h5 with the idea of playing ... h6 , where the bishop will control c1. Later, Black can double her rooks along the c-file, as well as preparing ... g7 . Black also has a possibility of a rook transfer on the kingside via c4. I believe that White’s position is preferable, but it is easier to play for Black and I have good practical chances here.) 25... $\text{f8!?$ (25... ec7 26. xe8 hx4 is also a possible continuation.) 26. xe8 xe8 The game may continue 27. f3 g7 28. d3 c4 , and despite the absence of a pawn, Black has clear play. Both rooks are active and I have no bad pieces.

21... e8 Prophylactic defense of the g6 square.

22. d4 c8 23. e3 White gradually brings more pieces into the attack and simultaneously defends the c3 pawn.

23... h8 It is very difficult to find moves like this, but otherwise Black is immediately in trouble. I am ready to play ...g5 on my next move, but of course my opponent does not allow it.

24.hxg6 At this moment, after defending constantly, I lost my patience and decided to make an active move.

24... xc3 24...fxg6 25. c1 g5±. 25.gxf7 xf7 26.b5 White does not want to give Black any chances, planning on c6 for the next move.

26... ec7 27. c6 f8 28. f3 It is possible that Alexander missed my next long move with the queen.

28... a3 29. d1 With 29. h4 White maintains his advantage. 29... d7 (29... xd3 30. d8+) 30. d1 stopping ... h5 . 29... d2 was also better than the move in the game, but it is difficult to voluntarily retreat a queen from the attack.

29... h5 Of course White saw ... h5 , but probably miscalculated later on. **30. h3 f7**

31. g3? I do not know the real reason for this mistake. Either Alex was continuing to play for a win and did not want to concede a draw. Or maybe he missed something in the following complications. 31. d2 xd1 32. hxh6+ A) 32... g8? Maybe this variation looked unclear to him. Here White must find two strong moves to finish the game in his favour. 33. h7+ f8 (33... h8 34. g6+ g8 35. xf7+ xf7 36. f4+ g8 37. xe6 winning for White.) 34. g5! threatening d8 . 34... e7 35. f6+ e8 36. g6+ d7 37. xe6+ ;

B) 32... hx6 33. hxh6+ g8 34. g6+ is a perpetual.

31... xd1 32. d8 e7 33. g6 xd3 34. hxh6+ hxh6 35. hxh6+ g8 36. dxe6 xe6 37. xe6+ f8 38. f6+ e8 39. e6+ f8 I did not want a draw, I was just repeating moves to make the time control and to think calmly after additional time.

40. f6+ e8 41. g6+ 41. e6+ d8 42. g8+ d7 43. f7+ e7 was leading to the same position as happened in the game.

41... d8 42. g8+ d7 43. f7+ e7 44. f5+ e6 45. xd3 h5 Black is winning, but some technique is still required.

46. h7+?! 46.f4! was offering White some practical chances. Now he is threatening an unpleasant a3 .

46... c8 (46... g6? 47. a3) 47. h7 e8 48. xa7 xb5 White exchanges a couple of pawns and Black still has to work hard to win the game.

46... f7 47.f4 g6 48. h3+ e6 49. a3 b1+ 50. f2 When there is a queen ending on the board there is always a possibility to make a mistake and allow a perpetual check. But in this position my moves are simple.

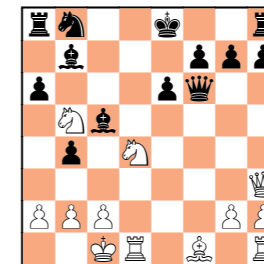
50... e8 51. d6 c2+ 52. g3 f5 53. c6+ f7 54. b7+ g6 55. xa7 Now I am picking up white pawns with checks. White’s position is hopeless.

55... g4+ 56. h2 xf4+ 57. h1 h4+ 58. g1 e1+ White resigned

And with this sensation I started the American Championship in San Diego, 2004. I was very happy to create it!

1	Maia Chiburdanidze	2400
	Vladimir Tukmakov	2560

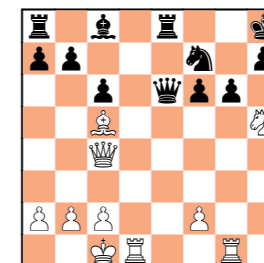
USSR 1980



White to move

2	Hou Yifan	2571
	Francisco Vallejo Pons	2702

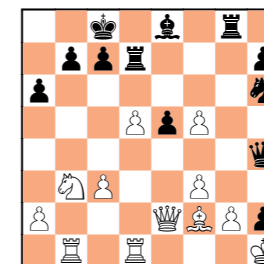
Wijk aan Zee 2009



White to move

3	Jan Timman	2635
	Xie Jun	2515

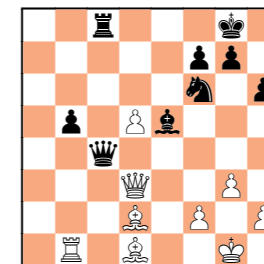
Donner Memorial-A, Amsterdam 1994



Black to move

4	Judit Polgar	2722
	Levon Aronian	2649

Hoogeveen 2003



White to move

16 Lela Javakhishvili

21 LANDMARK VICTORIES
QUEENS OVER KINGS

E70

Lela Javakhishvili	2430
Kiril Georgiev	2653

Gibraltar 2014
Notes by Lela Javakhishvili

1.d4 ♖f6 My opponent plays absolutely everything. This is why I did not even try to guess his choice of opening. In such cases I just rest before the game, read books or go for a walk. **2.c4 g6 3.♖c3 ♗g7 4.e4 0-0 5.♖f3 c6** A rare move. Even if you knew the theory here but did not remind yourself before the game, you will not be able to remember everything over the board. The only thing I knew was that the e5 move here is not that good.

6.♗e2 d5 7.e5 ♖e4 8.0-0 ♖a6 9.cxd5 cxd5 10.♗b3 ♖c7 11.a4 White's moves are logical – I want to play a4-a5 and seize space on the queenside. In addition, Black's bishop on c8 and knight on c7 look passive. Black's dark-squared bishop is also problematic. In these types of position, the bishop would have been better developed on the f8-a3 diagonal. In case of the exchange on c3 I was planning to recapture with the pawn with the idea of ♗a3 and a5 to follow. However, taking on c3 with the queen is also interesting...

11...b6 Black does not want to trade his only active knight and does not want to allow me to play a5 comfortably.

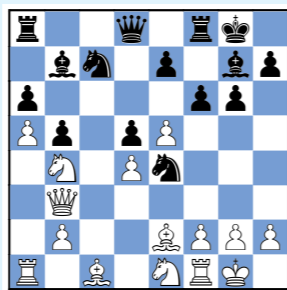
12.a5 b5 13.♖a2 My plan is simple, the c6 square is weak: that's why my knight goes to b4, the bishop to e3 and the rook to c1. Next, the knight will vacate f3 in order to play f2-f3. Black should try to break with ...f7-f6.

13...a6 14.♖b4 ♗b7 15.♖e1 f6 Here I thought for a long time. It is a critical moment in the game – which plan to choose. One setup is ♖d3, ♗e3 and f3. However, in this case Black has certain chances attacking White's pawn centre. It is likely to lead to a complex game although White should have an initiative. The second plan, which I chose, may at first not be so clear but has a sound strategic basis.

Lela Javakhishvili (born 1984 in Telavi) is a Georgian International Master (2005) and Woman Grandmaster (2003), with a peak FIDE rating of 2500 in March 2010. A four-time National Women's Champion (2001, 2007, 2014, 2016) she clinched her fifth national title in 2024 with a dominant unbeaten score of 7½/9.

Javakhishvili helped lead Georgia to gold at the 2008 Olympiad and the 2015 World Women's Team Championship, earning multiple individual medals across team events.

A longtime core member of Georgia's national squad, Javakhishvili remains a consistent top-20 women's player renowned for her solid strategic style and team-play strength.



16.f3 ♖g5 17.♗xg5 I give my opponent the two bishops advantage but forever close in the bishop on g7 and Black's light square bishop is also passive. I have plans of transferring my bishop to the h3-c8 diagonal and doubling my rooks on the c-file, depending on my opponent's actions. At first the computer does not approve of my choice but after some time it agrees with me!

17...fxg5 18.g3 ♖e6 19.♗e3 ♖c8 20.♖f2! I am following my plan; I want

to play ♗f1-h3. Black has to prevent it. **20...h5** Black is preparing to meet ♗h3 with ...g4 and ...♗h6 ideas. However, his last move creates a weakness on g6 which is why I adjust my strategy and start applying pressure on the kingside. **21.♗d3 21.♗f1 ♖h7 22.♗h3?! g4!?** **23.fxg4 ♗h6 24.♗d3 ♖g5∞.** **21...♖h7 22.f4! ♗h6 22...gxf4 23.gxf4 ♗h6 24.♗xg6+ ♖xg6 25.♗d3+ ♖g7 26.♖g2±.**

23.♖g2 ♖c4 Black could not tolerate the passive bishop on b7 any longer and tries to activate it by means of sacrificing the exchange. The computer does not agree with such drastic measures whilst admitting that Black's position is worse after **23...gxf4 24.gxf4 ♖c7±.**

24.♗xc4 dxc4? Nevertheless, even after the opening of the h1-a8 diagonal Black's position remains difficult.

25.d5! My idea behind the capture on c4! **25...gxf4 26.gxf4 ♖g7 26...♗xd5 27.♖d1 ♖c7 28.♖xd5 ♖xd5 29.♗a7+-.**

27.♗b6 ♖c8 28.♖h4 e6 29.♖af1! White's last three moves are also the engine's first suggestions. I like my ♖f1 move as it brings the last remaining piece into the play.

29...♗d7 30.♖g2 30.d6 is better strategically. Of course, here a few moves lead to the win, with ♖g2 amongst them as well. Taking into consideration my opponent's time trouble, I thought it was harder to defend after ♖g2.

30...♖f7 30...♗xf4 is the best defense, but White would still have a decisive

15 Alisa Maric

B46

Viswanathan Anand	2520
Alisa Maric	2345

Lugano 1988

1.e4 c5 2.♖f3 ♖c6 3.d4 cxd4 4.♖xd4 ♗c7 5.♖c3 e6 6.f4 a6 7.♖xc6 bxc6 7...♗xc6 8.♗d3 b5 9.♗e2 ♗b7

A) 10.a3 ♗c5 11.♗e3 ♖e7 12.♗xc5 ♗xc5 13.e5 d6 14.♗e4 (14.0-0-0 dxe5 15.♖e4 ♗xe4 16.♗xe4 ♖d8 17.fxe5 ♖g6 18.♖he1 0-0=) 14...♖c6 15.exd6 ♗xd6=;

B) 10.♗d2 ♗c5 11.0-0-0

B1) 11...b4? 12.♖d5!

B1a) 12...♗d6 13.♖e3 ♗xf4 14.♖c4 ♗h4 (14...♗c7 15.♗g4±) 15.♗e3!±;

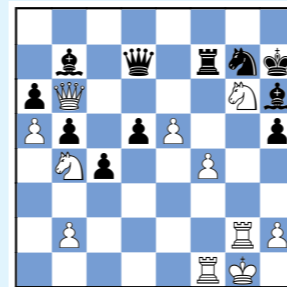
B1b) 12...a5 13.f5±;

B2) 11...♖e7 12.♗h5 g6 13.♗g5 0-0-0 14.♖he1 f5∞.

8.♗d3 8.e5 d5 9.exd6 ♗xd6 10.♖e4 (10.♗f3 ♖f6 11.g3 ♗b7 12.♗g2 ♖b8 13.0-0 c5=; 10.g3 ♖f6 11.♗g2 0-0 12.0-0 ♖b8 13.b3 ♗c5+ 14.♖h1 ♖d8 15.♗e1 ♗d4 16.♖b1 a5∞) 10...♗e7 11.♗d3 c5 12.♗e2 ♖h6!? **13.♖g5 ♖f5 14.0-0 g6 15.♗d2 0-0∞.** **8...d5 9.0-0 ♖f6 10.e5 10.♗e2 ♗e7 11.b3 0-0 12.♖h1 ♗b7 13.♗b2 c5∞.**

advantage. However, my opponent did not have enough time to calculate the consequences of the capture on f4. **31.♖xg6 ♗xh2+ 32.♖xh2 ♖xf1+ 33.♖xf1 ♗f7+ 34.♗f2 ♖xg6 35.♖g2 ♗b1+ 36.♗e1 ♗f5+ 37.♖g1±.**

31.♖xg6 exd5



32.♖h8! A simple tactic but still, I like it! **32...d4 33.♗g6+ ♖xh8 34.♗xh6+ ♖g8 35.e6**

Black resigned



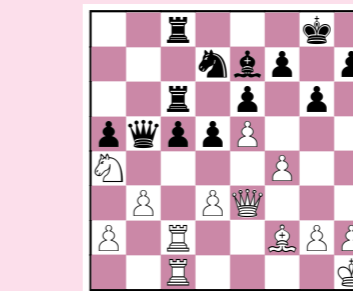
Alisa Maric (born 1970 in New York and raised in Fort Collins, Colorado) is a Serbian-American International Master (1993) and Woman Grandmaster (1988), who rose

to become one of the top female chess players of her era. At age 15 she won gold in the World U-20 Girls' Championship, and at 16 became Yugoslav Women's Champion. In 1990, she shared first place in the Candidates Tournament and played the final challenger match against Xie Jun to determine who would face reigning World Champion Maya Chiburdanidze.

At five consecutive World Championships between 1990 and 2000, she never placed lower than sixth – twice finishing third, twice fifth, and once sixth. She also competed

in many Olympiads, winning individual gold on first board in 1998. In addition, she collected numerous team medals at European Championships and in club competitions.

After earning a Ph.D. in Economics, she became a marketing professor, served as Serbia's Minister of Youth and Sports (2012-2013), and hosted the television program Alisa in the Wonderland of Chess. She is currently the captain of the Serbian Women's team.



30...c4! 31.♖c3 31.dxc4 dxc4 32.♗e2 ♗a3 33.♖e1 ♖g7∞. **31...♗a6 31...♗b7 32.bxc4 dxc4 33.d4 ♖b6 34.♖b1 ♗d7∞.** **32.bxc4 dxc4 33.d4 ♖b6! 34.♗f3?!** **34.f5 gxf5 35.♖b1**

A) 35...♖d7!? 36.d5 (36.♖d1 ♖b6=) 36... exd5 37.♖xd5 ♗f8 38.♗f3±;

B) 35...♖d5 36.♗g3+ ♖h8 37.♖xd5 exd5 38.♗f3

B1) 38...c3 39.♗xf5 (39.♗xd5? ♗d3 40.♖bc1 ♗g5+-) 39...♖6c7 40.h3 (40.♗xf7? ♗d3+-) 40...♖g7∞;

B2) 38...♖b6 39.♖bc1 ♗b7 40.♗xf5 ♖f8∞.

34...♖6c7 35.♗h3 ♖d7± 35...♗b4 36.♖e4 ♖d5 37.g4 c3±. **36.♗h4? 36.♗f3 ♗a3 37.♖b1 ♗b4 38.♖e4 ♖d5±.** **36...♗xh4 37.♗xh4 ♖xd4± 38.♖e2?! 38.♗f2 ♖d3 39.♖e4 ♖d5±.** **38...♖d5 39.♖e4 c3-+ 40.♖ee1 ♗d3 41.♖xc3 41.♖f6+ ♖xf6 42.exf6 ♗f5-+.** **41...♖xc3 42.♗d8+ ♖g7 43.♖f6 ♖xf6 43...♖xf4 44.♗g8+ ♖h6 45.♗xh7+ ♖g5 46.♖g1 ♖xf6-+.** **44.exf6+ ♖h6 45.♗f8+ ♖h5 46.♗xf7 ♖xf4 47.♖e5+ 47.♗xh7+ ♖g5-+.** **47...♖f5 48.♗xh7+ ♖g5 49.h4+ ♖xf6**

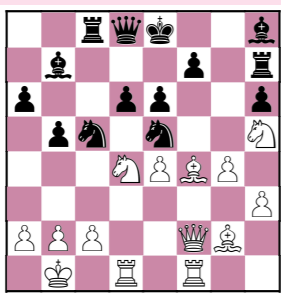
White resigned

14 Judit Polgar

B81	
Judit Polgar	2710
Veselin Topalov	2813

Hoogeveen 2006
Analysis by Judit Polgar

1.e4 c5 2.♂f3 d6 3.d4 cxd4 4.♂xd4 ♀f6 5.♂c3 a6 6.♁e3 e6 7.g4 h6 8.♁g2 g5 9.♖e2 ♀bd7 10.0-0 10.h4 ♖g8 11.hxg5 hxg5 12.0-0-0 ♀e5∞. 10...♂e5 11.h3 ♀fd7 11...b5 12.♂c6 ♖c7 (12...♂xc6 13.e5 ♁b7 14.exf6±) 13.♂xe5 dxe5 14.h4 ♖g8 15.hxg5 hxg5 16.f3†. 12.f4 12.h4!?. 12...gxf4 13.♁xf4 b5 14.♖hf1 ♁b7 14...b4!?. 15.♂a4 (15.♂b1) 15...♁b7. 15.♖f2 ♖c8?! 15...♖a5? 16.♁xe5 ♀xe5 17.♂xe6±. 16.♂ce2 ♁g7?! 16...♁e7!?. 17.♂b1 ♁h4 18.♂g3±. 17.♂g3 ♖h7 18.♂h5 ♁h8 19.♂b1 ♂c5? 19...♖b6 20.b3±.



20.♁g3? 20.♂f5! exf5 (20...♖c6 21.♂fg7+ ♁xg7 22.♂xg7+ ♖xg7 23.♁xe5) 21.♁xe5 ♁xe5 22.♖xf5+- 20...♂xe4?! 20...♁xe4? 21.♂xe6+-; 20...♖c7 21.♁h4 ♁xe4 22.♁f6 ♁xg2 23.♁xh8 ♖xh8 24.♖xg2∞. 21.♁xe4 ♁xe4 22.♁h4 ♖c7 23.♁f6 ♁g6 24.♁xh8 ♖xh8 24...♁xh5 25.♁xe5 dxe5 26.♂xe6 ♖c6 27.♂d4 exd4 28.gxh5±. 25.♂f6+ ♂d8□ 25...♂f8 26.♂d5!+-; 25...♂e7 26.♖h4. 26.h4 ♖c5 26...h5 27.♖f4! ♁xc2+ (27...hxg4 28.♖g5+-) 28.♂xc2 ♖xc2+ 29.♂a1 hxg4 (29...♂e7 30.♂e4) 30.♂e4 ♖c6 31.♂xd6. 27.h5 ♁h7 28.♖h4+- ♁xc2+ 28...♂c7 29.♂xh7 ♖xh7 30.♖xf7+! ♖xf7 31.♂xe6+. 29.♂xc2 ♖xc2+ 30.♂a1 ♖c4 30...♖c6 31.♂d5+ ♂d7 32.♖e7+ ♂c8 33.♂b4+-; 30...♂d3 31.♂d5+ ♂d7 32.♖e7+ ♂c6 33.♂b4+! ♂xb4 34.♖xd6+ ♂c5 35.♖xe6+ ♂d5 36.♖d6+ ♂c4 37.♖f4+ ♖e4 38.♖fx4 mate; 30...♂e7 31.♂g8+



♂f8 32.♂e7 ♖e8 33.♂g6+ ♂xg6 34.♖f6+- 31.♂e4+ ♂c7 32.♂xd6 ♖f4 33.♖e7+ ♂b6 34.♖b7+ ♂a5 35.♖a7 b4 35...♖xf1 36.♂b7+ ♂b4 37.♖d4+ ♂c4 38.♖c5+ ♂a4 39.b3+. 36.♖fe1 ♂f3 37.♖c1 ♂xe1 38.♖xc2 ♂xc2+ 39.♂b1

Black resigned

Judit Polgar (born 1976 in Budapest) is widely regarded as the greatest female chess player in history. She became a Grandmaster at 15, breaking Bobby Fischer's record as the youngest ever at the time. Judit consistently competed - and won - against the world's top male players, reaching a peak world ranking of No. 8 in 2005 with a career-high rating of 2735. She defeated 11 world champions across formats and never competed in women-only events. Retiring from competitive chess in 2014, Judit now focuses on chess education, commentary, and global promotion of the game as a universal educational tool. In 2021, she was inducted into the World Chess Hall of Fame.

21 LANDMARK VICTORIES QUEENS OVER KINGS

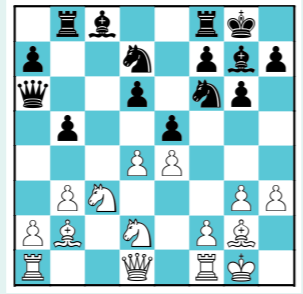
13 Humpy Koneru

E2	
Humpy Koneru	2572
Evgenij Miroshnichenko	2671

Abu Dhabi Open 2007



1.d4 ♀f6 2.♂f3 g6 3.c4 ♁g7 4.g3 0-0 5.♁g2 c6 6.♂c3 d6 7.0-0 ♖a5 8.h3 ♖a6 9.♂d2 ♂bd7 9...♁e6 10.d5 cxd5 11.cxd5 ♁d7 12.♖b1 ♖c8 13.a3 b5 14.e4 ♖b7 15.♖e1 a5 16.e5 ♂e8∞. 10.b3 ♖b8 11.♁b2 b5 12.e4 e5 13.cxb5 cxb5



14.a4! bxa4 14...b4 15.♂b5 ♁b7

16.♖e1 ♖fd8 17.♂c4±. 15.♂c4 ♖b7 15...♖c6 16.d5 ♖c7 17.♂xa4 ♁a6 18.♖c1±. 16.♂xd6 ♖xb3 17.♂xa4! exd4 18.♁xd4 ♖e6 19.♁xa7 ♖a8 20.♂c3 ♂e8 21.♂xe8 ♖xe8 21...♁xc3? 22.♂c7+- 22.e5+- ♖xe5 23.♁xa8 ♖xc3 24.♖a4 ♖e5

Humpy Koneru (born 1987 in Gudivada) is one of India's most celebrated chess grandmasters. She earned the GM title in 2002 at just 15 years old - becoming the youngest female GM of the time and the first Indian woman to achieve that status. She crossed the 2600 Elo threshold in October 2007, becoming only the second woman ever to do so. A two-time Women's World Rapid Champion (2019, 2024), Humpy has also earned gold medal in the 2020 Chess Olympiad, and bronze in 2021 and 2022. Known for her fighting spirit and longevity, she balances motherhood and chess with grace and remains a powerful ambassador for women's chess in India.

25.♖ac1 ♂f6 26.♁c6 ♖f8 27.♁c5 ♁xh3 28.♁xf8 ♁xf8 29.♖fe1 ♖g5 30.♁g2 ♁e6 31.♖b1 ♁c5 32.♖xe6! fxe6 33.♖b7 ♖c1+ 34.♂h2 ♁f8 35.♁h3 ♖d2 36.♁xe6+ ♂h8 37.♂g2 ♖d6 38.♖c4 h5 39.♖c8

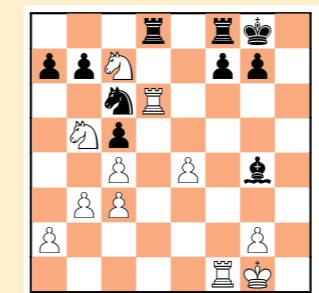
Black resigned

12 Ketevan Arakhamia-Grant



Ketevan Arakhamia-Grant (born 1968 in Ochamchire) is a Georgian-Scottish Grandmaster (GM), earning the full GM title in 2009 - becoming Scotland's sixth ever. She captured the World Junior Girls' Championship in 1985 and won the Soviet Women's Championship in 1990. A key member of Olympiad teams from the USSR, Georgia, and later Scotland, she collected nine Olympiad medals, including two team and three individual golds. Arakhamia-Grant also claimed multiple national titles - Georgian Women's Champion, Scottish Champion, and four-time British Women's Champion - and scored notable wins over elite GMs such as Smyslov and Nakamura.

♂xd7 32.♂f2±.



B30

Hikaru Nakamura	2651
Ketevan Arakhamia Grant	2437

Gibraltar 2007

1.e4 c5 2.♂f3 ♂c6 3.♂c3 e5 4.♁c4 ♁e7 5.d3 ♂f6 6.0-0 0-0 7.♂g5 h6 8.f4 exf4 8...d6 9.♂f3 exf4 10.♁xf4 ♁e6 11.♂d5 ♁xd5 12.exd5 ♂a5∞. 9.♂h3 ♂e5 9...f3 10.♖xf3 ♂d4 11.♖d1 d6 12.♂f4±; 9...g5 10.♂xf4! gxf4 11.♁xf4∞. 10.♂xf4 ♂xc4 11.dxc4 d6 12.b3 ♂g4 13.♂fd5 ♁g5 14.♖e1 ♁xc1 15.♖xc1 ♁e6 16.♖g3 ♖g5 16...♂e5 17.♖cd1 a6 18.♂e3±. 17.♖cd1 ♖ad8 18.h3 ♂e5 19.♖xg5 hxg5 20.♂b5 ♂c6 21.♂dc7 ♁c8 22.c3 g4 23.hxg4?! 23.h4! ♖d7 24.♖xd6 ♖e7 25.♖f4 a6 26.♂d5! ♖e6 (26...axb5 27.♖xc6 bxc6 28.♂xe7+-) 27.♖xe6 fxe6 28.♖xf8+ ♂xf8 29.♂d6±. 23...♁xg4 24.♖xd6? 24.♖d5 ♖d7 25.♖xd6 ♖xd6 26.♂xd6 ♖d8 27.♂xf7 ♖d7 28.♂h6+! gxh6 29.♂e8 ♂e5 30.♂f6+ ♂g7 31.♂xd7

24...a6! 25.♖xd8 ♖xd8 26.♂a3 ♖d2+ 27.♖c1 27.♖a1 ♁e2 28.♂d5 ♁d3+. 27...♖xa2 28.♂c2 ♂e5 29.♂e3 ♁e2 30.♂cd5 ♁d3 31.♖d1 ♁xe4 32.♂e7+ ♂h7 33.♂h2 g6 34.♂g3 ♂d3 35.♂7d5 ♂g7 36.♂f4 ♂xf4 37.♂xf4 ♁xg2 38.♂xg2 ♖xg2+- 39.♖d6 ♖f2+ 40.♂e4 ♖f6 40...g5 41.♖d5 ♂g6+- 41.♖d1 ♖b6 42.♖b1 ♖d6 43.♂e5 ♖d3 44.b4 cxb4 45.cxb4 f6+ 45...f5 46.b5 axb5 47.♖xb5 ♖d7+- 46.♂e6 ♖e3+ 47.♂d6 ♂f7 48.♖h1 ♖e6+ 48...f5 49.♖h7+ ♂f6 50.♖xb7 f4+- 49.♂c7 ♖c6+? 49...♖e7+ 50.♂d6 ♂f8!+- 50.♂xb7 ♖xc4 51.♖b1=f5 52.♂xa6 f4 53.b5 ♖a4+ 54.♂b7 ♂e6 55.b6 g5 56.♂b8? 56.♂c7! f3 57.b7 ♖a7 58.♖b6+ ♂e5 59.♖b5+ ♂f4 60.♖b4+ ♂g3 61.♂d6 ♖xb7

62.♖xb7=. 56...f3 57.b7 ♖f4+- 58.♖e1+ ♂f5 59.♖b1 ♖c4 60.♂a8 ♖a4+ 61.♂b8 ♖c4 62.♂a8 ♖a4+ 63.♂b8 ♖e4! 64.♂c7 ♖e8+- 65.♖d1 65.b8♖ ♖xb8 66.♖xb8 g4 67.♖f8+ ♂e4+- 65...g4 66.♖d8 ♖xd8 67.♂xd8 f2 68.b8♖ f1♖ 69.♖c8+ ♂f4 70.♖c7+ ♂f3 71.♖f7+ ♂g2 72.♖d5+ ♖f3 73.♖d2+ ♂f1 74.♖c1+ ♂e2 75.♖c2+ ♂e1 76.♂c7 g3 77.♖c1+ ♂f2 78.♖d2+ ♖e2 79.♖f4+ ♂g2 80.♂d6 ♖a6+ 81.♂c5 ♖a5+ 82.♂c6 ♖c3+ 83.♂d6 ♂g1 84.♂e6 g2 85.♂f5 ♖h3+ 86.♂g5 ♂h1 87.♖e4 ♖g3+ 88.♂f5 ♂g1 89.♖b1+ ♂h2 90.♖b2 ♖h3+ 91.♂f4 ♖g3+ 92.♂f5 ♖d3+ 93.♂f4 ♖d6+ 94.♂g4 ♖d7+ 95.♂f4 ♖c7+ 96.♂g4 ♖c8+ 97.♂f3 ♖a8+ 98.♂f4 ♂h1 99.♖b5 g1♖ 100.♖d5+ ♖g2

White resigned

21 LANDMARK VICTORIES
QUEENS OVER KINGS

10 Zoey Tang

D16

Nico Chasin	2421
Zoey Tang	2265

1000GM Silicon Valley 2023
Notes by Zoey Tang



Zoey Tang is a 17-year-old WGM and FM residing in Portland, Oregon. Currently she is No.3 rated U.S. woman with a peak rating of 2381. Zoey is the first girl to have won the Oregon State Championship. In 2022, she founded a non-profit organization called Puddletown Chess. In July 2025 Zoey won the U.S. Junior Girls' Championship. Besides chess, Zoey loves playing the piano and reading.

1.d4 d5 2.c4 c6 3.♘f3 ♘f6 4.♗c3 dxc4 5.a4 e6 My pet line at the time. The light-squared bishop is blocked in to facilitate rapid center counterplay instead. 5...♗f5 is the main line.

6.e3 c5 7.♗xc4 ♗c6 8.0-0 cxd4 9.exd4 9.♗xd4 is also possible, though the structure becomes symmetrical after 9...♗d7 10.e4 ♗xd4 11.♖xd4 ♗c6± It's not at all easy for White to play for a win.

9...♗e7 This classic IQP structure is reminiscent of a QGA. In fact, this position can be reached exactly via QGA mainlines, with one difference – because Black played ...c6-c5, rather than ...c5 in one move, White is up a tempo, which has been used to play a2-a4 for free (usually White plays a4 to respond to Black's ...a6). At first glance this appears beneficial because of the control over b5, but it also weakens the key b4 square. A key maneuver for Black in IQP structures is ...♗b4-d5, aiming to control the square in front of the isolated pawn.

10.♗e1 Not the most challenging line. 10.♖e2 followed by ♗d1 is the more typical and natural setup, allowing the d5 break to potentially occur with an alignment against the black queen.

10...0-0 11.♗g5 The first move outside of my preparation. I was somewhat surprised by it, as it makes trading dark-squared bishops more likely. Usually, the side with the isolated pawn wants to avoid trading minor pieces.

11...♗b4 12.♖e2 h6 13.♗h4 ♗fd5 14.♗xd5 14.♗g3 is more logical, preserving at least one extra pair of minor pieces.

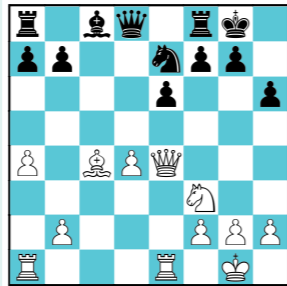
14...♗xd5 15.♗xe7 ♗xe7 Already my position looks quite pleasant. Once the light-squared bishop is developed, all attention can be focused on attacking the d4 pawn.

16.♖e4 Probably the idea of allowing the minor piece trades.

17...♗c6 18.♗xc6 bxc6 The c-pawn, by virtue of having a minor piece babysitter, is not nearly as weak as its d4 counterpart. After 18...♗xc6?! 19.d5 exd5 20.♗xd5± White has control over the open files, and the bishop will likely fare better in the open position.

19.♗d3 g6 The knight on e7 is too important a defender of c6 to delegate to king-guarding duties.

20.♖f4 ♗h7?! This steps onto the bishop's diagonal, but I wanted to avoid the ♖e5+ issues that could arise after ...♗g7. In fact, 20...♖b8! , completely ignoring the h6 pawn, was best.



My bishop can't be developed for fear of ♖xb7, so what should I do?

16...♗d7 The most principled move by far. Yes, b7 is hanging, but because this move is the only way to develop the bishop it's worth it to try and "make it work". As GM Sam Shankland puts it, what if I play it anyway?

Upon 16...♖b8?, the rook is loose, which becomes problematic after 17.♗d3 g6? (17...♗g6 18.♗e5) 18.♖f4!+-.

17.♗e5 17.♖xb7 looks quite risky to the human eye. 17...♗c6 18.♖b3 ♖b8 19.♖c3. Black has gained two tempi in a row, and b2 is quite weak. White's queen is overloaded.

19...♗xf3 20.♖xf3 (20.gxf3?! ♗c8 21.b3 ♗f5± White has too many weaknesses – d4, g2, and f3 are all viable targets.) 20...♖xb2 Black's position would be classified as playing for free, except White has 21.d5! ♗xd5 22.♗ed1= and the game will probably fizzle out.

21.h4 ♗d5 22.♖g3 ♖f6 Preparing for the inevitable opening of the f-file and weakening of the e6 pawn. 22...h5? would be punished with 23.♖xe6!±.

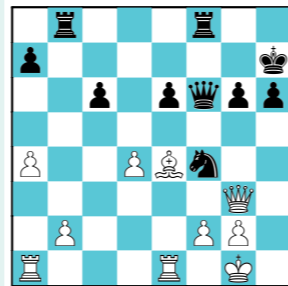
23.h5 ♗f4 24.hxg6+ fxg6 25.♗e4 ♖ab8

23...♗xg2 An easy way to win, so I didn't spend much time. 33...♖xg2+ is even prettier. 34.♗f1 ♗h3! 35.♖xg2 (or 35.♖xf6 ♖xf2+ 36.♖xf2 ♖xf2 mate.) 35...♖xf2+ 36.♖xf2 ♖xf2 mate.

34.♖xf6 ♖xf6 35.♖e4 ♖xe6 36.♖exe6 ♗f4+ 37.♗f1 ♗xe6 38.♖xe6 ♖xa5 Two pawns up is easily winning.

39.♗g2 ♗g7 40.f4 ♗f7 41.♖c6 ♖a3 42.♗d6 a5 43.♖b6 a4 44.♖a6 ♖a1 45.♗f2 a3 46.♗g2 a2 White's king is tied to g2 or h2, since other squares allow Black's rook to escape and promote. Black's king will eventually capture f4, and the kingside passers will decide the game.

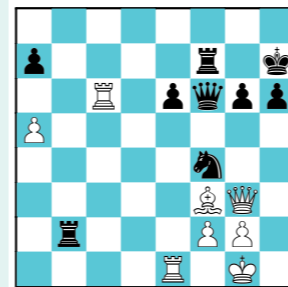
White resigned



Finally all my pieces are developed. 26.♗xc6?! 26.♖ab1 ♖b4 27.♗xc6 ♖xd4 This preserves an extra pawn (b2) compared to what happened in the game. The d-pawn was doomed anyway. 28.♖e3 ♗d3 29.♖c5 ♗d2 30.♗f3∞ Black now has the initiative, but White should be able to hold on.

26...♖xb2 27.♗f3 ♖xd4 28.♖ac1?! Leaving be my annoying b2 rook. 28.♗ed1 ♖g7 29.♖ab1± would pretty much neutralize my threats. Now I am "only" a pawn up, while White has slightly better control over the open files.

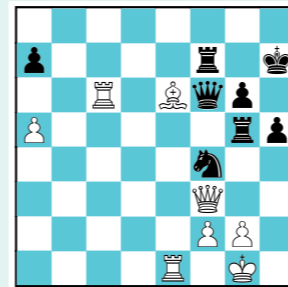
28...♖f7 29.a5 ♖f6 Threatening ...♗d3, now that there's no danger of it being pinned. 30.♖c6?



30...♖b5! A pretty maneuver that I was very happy to find during the game. The white queen is suddenly short on squares.

31.♗g4 31.♗e4 ♖g5 32.♖e3 ♗h3+!+-.

31...♖g5 32.♖f3 h5 33.♗xe6



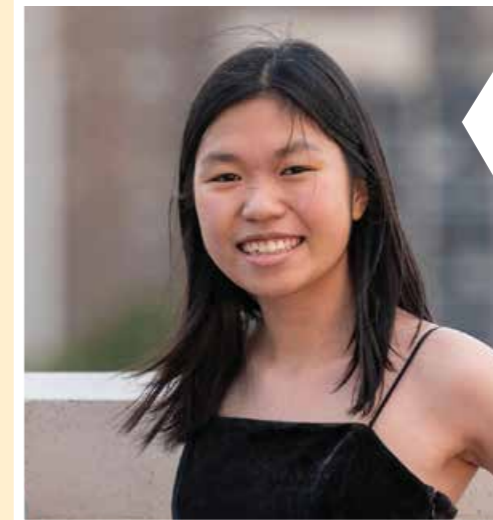
33...♗xg2 An easy way to win, so I didn't spend much time. 33...♖xg2+ is even prettier. 34.♗f1 ♗h3! 35.♖xg2 (or 35.♖xf6 ♖xf2+ 36.♖xf2 ♖xf2 mate.) 35...♖xf2+ 36.♖xf2 ♖xf2 mate.

34.♖xf6 ♖xf6 35.♖e4 ♖xe6 36.♖exe6 ♗f4+ 37.♗f1 ♗xe6 38.♖xe6 ♖xa5 Two pawns up is easily winning.

39.♗g2 ♗g7 40.f4 ♗f7 41.♖c6 ♖a3 42.♗d6 a5 43.♖b6 a4 44.♖a6 ♖a1 45.♗f2 a3 46.♗g2 a2 White's king is tied to g2 or h2, since other squares allow Black's rook to escape and promote. Black's king will eventually capture f4, and the kingside passers will decide the game.

White resigned

10 Carissa Yip



Carissa Yip (born 2003 in Boston) is an American International Master (2020) and Woman Grandmaster (2019). A chess prodigy, she became the youngest American female to defeat a grandmaster at age 10 and steadily set age-records as Expert, National Master, and IM. A three-time U.S. Women's Champion (2021, 2023, 2024), Yip won individual gold on Board 2 with a performance of 2634 at the 2024 Olympiad in

Budapest. In June 2025 she won the prestigious Cairns Cup, earning her second GM norm and solidifying her status as U.S. No. 1 woman player.

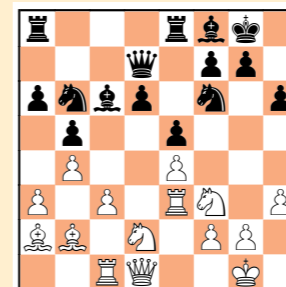
C93

Semen Khanin	2566
Carissa Yip	2369

Philadelphia 2023

1.e4 e5 2.♗f3 ♗c6 3.♗b5 a6 4.♗a4 ♗f6 5.0-0 ♗e7 6.♖e1 b5 7.♗b3 d6 8.c3 0-0 9.h3 ♗b7 10.d4 ♖e8 11.♗bd2 ♗f8 12.a3 h6 13.♗a2 ♗b8 14.d5?! 14.b4 ♗bd7 15.♖b3∞.

14...c6! 15.dxc6 ♗xc6! 16.b4 ♗bd7 17.♗b2 ♗b6± 18.♖c1 ♖d7 19.♖e3



19...d5!± 20.exd5 ♗fxd5?! 20...♗bxd5! 21.♖xe5 ♗d6 22.c4 ♗f4 23.♖e3 ♖xe3 24.fxe3 ♗d3±.

21.♖xe5 ♗f4 22.♗b1? 22.c4 ♗d3 23.cxb5! axb5 24.♖xc6! ♖xc6 25.♗xf7+! ♗xf7 26.♖b3+ ♗c4 27.♗d4!∞.

22...♗d6+- 23.♖e3 ♗bd5 23...♗xg2!! 24.♗xg2 ♗d5+-.

24.♖xe8+ ♖xe8 25.c4 ♗e2+ 25...♗xh3+! 26.gxh3 ♗f4+-.

26.♗f1 bxc4 27.♖xc4 ♗b5 28.♖c2 g6 29.♗a2 ♖e6 30.♖e4

30...♗g3+! 31.fxg3 ♖xe4 32.♗xe4 ♖xe4 33.♗d4 ♖xd4! 34.♗xd4 ♗xc4+ 35.♗xc4 ♗e3+ 36.♗e2 ♗xc4 37.♗c2 ♗xg3 38.♗d3 ♗b6 39.♗c3 f5 40.♗b3 ♗f2 41.a4 ♗f7 42.a5 ♗d5 43.♗a3 ♗c7

White resigned



9 Hou Yifan

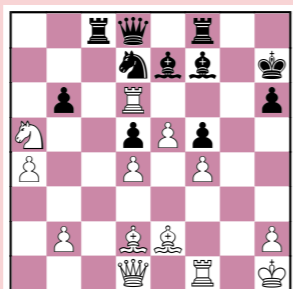


Hou Yifan (born 1994, in Xinghua, China) is a chess prodigy turned legend. She earned the title of Grandmaster in 2008 at age 14 – making her the youngest female GM ever – and captured the Women's World Championship in 2010 at just 16. She defended her title successfully in 2011, 2013, and 2016. At her peak, she was rated as high as 2686 and ranked among the world's top 100 players – a rare distinction for a woman.

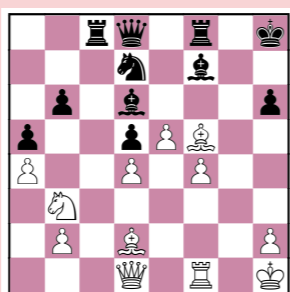
Semi-retired since 2018, in 2020 Hou Yifan became the youngest ever professor at Shenzhen University before she moved to Peking University, while remaining a respected figure in chess.

21 LANDMARK VICTORIES QUEENS OVER KINGS

20...♙f7. 21.♞xe6 ♙f7 22.♞d6 ♙e7 23.♙d3 23.♜xa5!



23...bxa5 (23...♙xd6 24.♜b7+-) 24.♞a6
A) 24...♜b8 25.♙xa5 ♖d7 26.♙b5 ♜c6 27.e6! (27.♖c1 ♙e8) 27...♙xe6 28.♖c1 ♜b8 29.♙xd7 ♞xc1 30.♞xc1 ♙xd7 31.♞a7+-;
B) 24...♞a8 25.♙xa5 ♖c8 26.♞xa8 ♞xa8 27.♙c3±.
23...♙xd6 24.♙xf5+ ♜h8



25.♖g4! 25.exd6 ♞c6∞. 25...♞c7 25...♞g8 26.♖h3 ♙f8 27.e6 ♙g6 28.♙xg6 ♞xg6 29.exd7 ♙c7 30.f5 ♖xd7 31.♙f4 ♞cc6 32.♙e5+ ♙g8 33.♜d2±. 26.♖h3 h5 27.exd6 ♞a7 28.♙e6 ♜f6 28...♖e8 29.♞e1 ♜f6 30.f5 ♜e4 31.♞xe4! dxe4 32.d5+-. 29.f5 ♖xd6 30.♙f4 ♖d8 30...♖e7 31.♙e5 ♜h7 32.♜d2± (32.♞g1 ♞g8 33.♞xg8 ♜xg8 34.♖g3+ ♜h7 35.♖g5 ♜e8 36.♖g2 ♞c7 37.h3 ♞c6 38.♖xd5 ♞xe6 39.fxe6 ♖xe6 40.♖xe6 ♙xe6 41.♜d2 ♙xh3 42.♜c4±) 31.♙e5 ♙g8 31...♜h7 32.♜d2+- ♜f3-g5. 32.♖xh5+ ♞h7 33.♖g5 ♖e7 34.♜c1 ♖g7 35.♖xg7+ ♞xg7 36.♜d3 ♞g4 36...♜h7 37.♜f4 ♜h6 38.♞c1+-. 37.♜f4 ♜h7 38.h3 ♞g3 39.♜g6 ♞xh3+ 40.♜g2

Black resigned

8 Susan Polgar



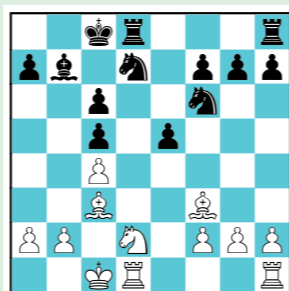
D31

Susan Polgar	2550
Kiril Georgiev	2615

Pardubice 1994

Analysis by Susan Polgar

1.d4 d5 2.c4 e6 3.♜c3 c6 4.e4 dxe4 5.♜xe4 ♙b4+ 6.♙d2 ♖xd4 7.♙xb4 ♖xe4+ 8.♙e2 ♜d7 9.♜f3 c5 10.♙c3 ♜g6 11.♖d6!N 11.0-0. 11...♖c6□ 11...b6? 12.♜d2 ♜f3+-.
 12.♖xc6 bxc6 13.♜d2∞ ♙b7 14.0-0-0 0-0-0 15.♙f3! 15.♜b3 ♜e4. 15...e5?! 15...♜b6 16.g4! (16.b3 ♜bd7) 16...h6 (16...♜a4 17.♙xf6 gxf6 18.♜e4 ♞d4 19.b3±) 17.h4∞.



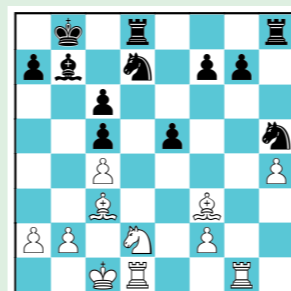
16.g4!± 16.♞he1 ♞he8 17.♜b3 e4. 16...h6 16...♞he8 17.g5 ♜d5 18.cxd5 cxd5 19.♙a5 ♜b6 20.♜b3 c4 21.♜c5+-. 17.h4 h5

Susan (Zsuzsa) Polgar (born 1969 in Budapest) is a pioneering Hungarian-American Grandmaster. In 1984, at just 15, she became the world's top-ranked

female player, and in 1991 she shattered barriers by becoming the first woman to earn the Grandmaster title via conventional norms. In 1996, she claimed the Women's World Championship, securing the rare chess triple crown of classical, rapid, and blitz titles. She also earned 12 Olympiad medals and coached top Division I collegiate teams to unmatched success.

A respected author and educator, she leads the Susan Polgar Foundation promoting chess education for youth, especially girls. In 2019 she was inducted into the U.S. Chess Hall of Fame.

17...g5 18.hxg5 hxg5 19.♜e4±. 18.gxh5! 18.g5 ♜g4 19.♜e4∞. 18...♜b8 18...♜xh5 19.♜e4±. 19.♞hg1 ♜xh5 19...♞h7 20.♜e4 ♜xe4 21.♙xe4 ♞xh5 22.♞xg7 ♞xh4 23.♙f5 ♙c8 24.♞xf7+-.



20.♜e4! 20.♙xh5 ♞xh5 21.♞xg7±. 20...♙c8 20...f5 21.♜d6 e4 22.♙xh5 ♞xh5 23.♜xb7 ♜xb7 24.♙a5+-.
 21.♜d6 f6 21...♞df8 22.♙xc6 ♜hf6 23.♞xg7 ♞xh4 24.♜xf7 ♞xc4 25.♙b5 ♞e4 26.♜d6+-.
 22.♜f7 ♞df8 23.♜xh8 ♞xh8 24.♙xh5 ♞xh5 25.♞xg7 ♜b6 26.♞d8 ♞xh4 27.b3 ♙f4 28.♙a5 ♜d5 29.g3 ♞h8 20.♜d5+

Black resigned



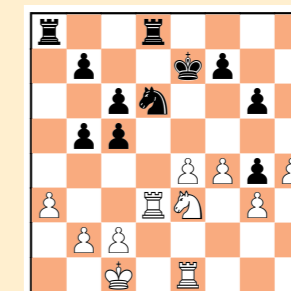
7 Anna Muzychuk



Anna Muzychuk (born 1990 in Lviv) is a Ukrainian Grandmaster and one of the most accomplished female players of her generation. The fourth woman ever to surpass a 2600 FIDE rating (2606 in July 2012), she reached No. 2 in the women's world rankings. A three-time women's world champion in fast formats, she won the Rapid title once (2016) and the Blitz title twice (2014 and 2016). In classical chess, she was runner-up in the 2017 Women's World Championship. Muzychuk represented Slovenia from 2004-2014 before returning to Ukraine, earning multiple team medals – including individual gold on Board 1 at the 2016 Olympiad and a stellar 2782 performance in Tromsø, which secured her final GM norm.

She also won the 2025 Norway Chess Women's title, earning equal prize money with Magnus Carlsen in the open section – a landmark moment for gender parity in chess.

cx d5 21.exd5 c6 22.dxe6 fxe6 23.c3 ♜f5=. 19.♙xg4 hxg4 20.g3 ♜d6 21.♞d3 ♞hd8 22.♜d1 c5?! 22...♞a4 23.e5 ♜f5 24.♞xd8 ♜xd8 25.♞g1 ♞e4 26.♜d2 ♞d4+ 27.♜e2 ♞e4+=. 23.♜e3 c6



C47

Anna Muzychuk	2537
Laurent Fressinet	2700

Gibraltar 2016

1.e4 e5 2.♜f3 ♜c6 3.♜c3 ♜f6 4.d4 exd4 5.♜xd4 ♙c5 6.♙e3 ♙b6 7.♖d2 7.♜xc6 bxc6 8.♖d2 0-0∞. 7...♜g4 7...0-0 8.0-0-0 ♞e8 9.f3 d5 10.exd5 ♜xd5 11.♙g5 ♜de7 12.♜xc6 ♖xd2+ 13.♙xd2 ♜xc6 14.♜d5±. 8.♜xc6 dxc6 8...bxc6 9.♙d4 0-0 10.f3 ♜f6 11.0-0-0±. 9.♖xd8+ ♜xd8 10.♙xb6 axb6 11.f3 ♜f6 12.0-0-0+ ♜e7 13.♙e2 h5 14.h4 b5 15.a3 ♙e6 16.f4 g6 17.♞he1 ♜e8 18.♙f3 ♙g4 □ 18...♜d6 19.g3 ♞h8 20.♜d5+

24.e5! 24.♜xg4 c4 25.♞de3 b4 26.♜e5 (26.axb4 ♞a1+ 27.♜d2 ♜f5+ 28.♞d3 cxd3 29.♞xa1 ♜xg3 30.cxd3 ♜xe4+ 31.♜c2 ♜d6=) 26...c3 27.bxc3 bxa3 28.♜b1 a2+ 29.♜a1 ♜b5∞. 24...♜c4 24...♜f5 25.♜xf5+ gx f5 26.♞xd8 ♞xd8 27.♞d1±. 25.♞xd8 ♞xd8 26.♜xg4± b4 27.a4 b5 28.b3 ♜a3 29.a5 c4 30.♞d1 ♞a8 31.♜f6+- ♞xa5 32.♞d7+ ♜e6 33.g4 ♞a8 34.♞d6+ ♜e7 35.♞d7+ 35.♞xc6 c3 36.♜d5+- . 35...♜f8 36.e6 fxe6 37.♜h7+ ♜g8 38.♜f6+ ♜f8 39.h5! gxh5 40.♜h7+ ♜g8 41.♜f6+ ♜f8 42.g5

Black resigned

6 Bella Khotenashvili

21 LANDMARK VICTORIES
QUEENS OVER KINGS

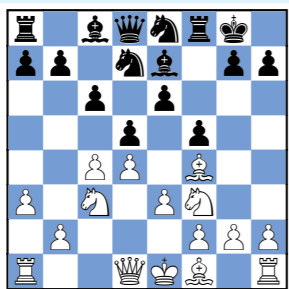
D35

Baadur Jobava	2722
Bela Khotenashvili	2504

Qatar Masters Open, Doha 2014
Notes by Bela Khotenashvili

We played this game in the first round of the Qatar Masters. Jobava is famous for his aggressive and attacking style. For that reason I decided to choose a solid opening, the Queen's Gambit, which was part of my repertoire for the last two years.

1.d4 d5 2.c4 e6 3.♘c3 ♗e7 4.♗f4 ♘f6 5.e3 0-0 6.a3 ♘bd7 7.♘b5 ♘e8 This move was played for the first time by Aronian against Gelfand in 2012, after that it became popular. 8.♘f3 c6 9.♘c3 f5



10.h4N This move is a novelty in this variation and the main continuation is 10.h3. After 10.h4 it is likely that White is planning an attack on the kingside.

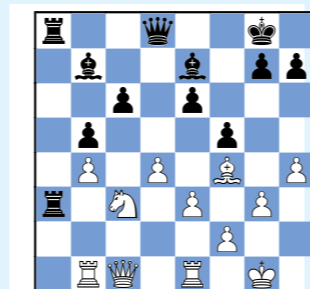
10.h3 ♘d6 11.cxd5 exd5 12.♗d3 ♘f6 13.♘e5 ♘fe4 14.♘e2 ♘f7 15.0-0 ♗f6 16.f3 ♘e6 17.♖c2 ♖e7 18.♘xf7 ♗xf7 19.♗ae1 ♗g5 20.e4 ♗xf4 21.♘xf4 ♖h4 22.♘xd5 cxd5 (22...♗xe4 23.♖c5 ♖g3 24.♗xe4 ♗xh3 25.♗e2 ♘xe4 26.♘e7+ ♗xe7 27.♖xe7 ♘d6 28.♖e5 ♖g6) 23.♖c5 ♖e7 24.exf5 ♖f6 (Better was 24...♖d8 to take control of the e8 square for transferring the knight to f6 25.g4 ♘e8 26.♗e5 ♘f6) 25.g4 ♗xf5 26.gxf5 ♖g5+ 27.♘h1 ♘xf5 28.♗e5 ♘g3+ 29.♘g2 ♘f5+ 30.♘h1 ♘g3+ ended in a draw in A.Stefanova 2531 - B.Khotenashvili 2531, Dilijan 2013. 10...♘d6 After a lengthy think I decided



Bella Khotenashvili (born 1988 in Telavi) is a Georgian Woman Grandmaster (2013). She gained prominence by winning the World Youth Chess Championship in the Girls' U-16 category in 2004. In 2012, she clinched the Georgian Women's Championship title. Khotenashvili achieved her third and final GM norm by winning the Women's FIDE Grand Prix in Geneva in 2013. She has represented Georgia in multiple Women's Chess Olympiads and World Team Championships, earning several team and individual medals. Her peak FIDE rating was 2531 in June 2013, and she reached No. 8 in the women's world rankings.

to continue with a typical plan for these kinds of positions. 11.♘d2 ♘f6 12.g3 ♘xc4 White weakened the light squares with g3 so I decided to open the center. 13.♘xc4 dxc4 14.♗xc4 ♘d5 15.♘e2 In my opinion it was better to play 15.♘xd5 exd5 16.♗d3 when White has

the better pawn structure. 15...b5 16.♗xd5 I have to say I did not expect this move. I considered the main variation to be 16.♗a2 a5 17.0-0 ♗a6 18.♗e5 b4, with an equal position. After ♗d5 I believe that Black has the better prospects. It is true that, for the moment, the light-squared bishop is closed. However, it can become a strong piece in the future, because of White's light square weaknesses. 16...♖xd5 17.0-0 ♗b7 18.♘c3 ♖d7 19.b4 Logical. However, after ...a5 White will have a weakness on b4. 19...a5 20.♗b1 axb4 21.axb4 ♗a3 I have to admit that after ... ♗a3 I already liked my position. Control of the a-file, two bishops and the b4 weakness give Black good chances. 22.♖c1 ♗fa8 23.♗e1 In this position I spent a lot of time searching for the right idea and believe I managed to choose an interesting plan. Taking advantage of the weakness on b4, Black activates the queen that was not contributing much so far. 23...♖d8



24.♗e2 The transfer of the rook to b2 to defend the b4 pawn looks suspicious. Instead, 24.♗c7 deserved attention. 24...♖f8 25.♗a5 ♗8xa5 26.bxa5 ♗b4 27.♘e2 ♗xe1 28.♖xe1 ♖d6=. 24...♖f8 25.♗eb2 ♖f7 With the idea

of ...♖h5-f3. 26.♗e5?! ♖h5 27.♗b3 After this move Black gets a decisive advantage. Better was 27.♖d1 ♖xd1+ 28.♘xd1 ♗a1 29.♘f1 ♗xb1 30.♗xb1 ♘f7, with the idea of ...♗a4. 27...♗xb3 28.♗xb3 ♖f3 29.e4 fxe4 30.♘d5 In Jobava's style! I was expecting such a sacrifice the whole game, however it does not change the assessment of the position. 30...♖xb3 31.♘xe7+ ♘f7 32.d5!?



32...e3! After the game Jobava said to me that he missed this move during his calculations. After 32...e3 White's position is hopeless. 33.dxc6 exf2+ 34.♘g2 ♗a2 35.♗b2 ♘xe7 Better was 35...♗xb2 36.♖f4+ ♘xe7 37.♖c7+ ♘e8 38.♖d7+ ♘f8 39.♖d6+ ♘f7 40.♖c7+ ♘g6 41.h5+ ♘xh5 42.♖f7+ ♘h6 43.♖f4+ g5 44.♖f6+ ♘h5 45.g4+ ♘h4 46.♖h6+ ♘xg4+ 36.♖g5+ ♘e8 37.♖h5+ ♘d8 38.cxb7 f1♖+ 39.♘xf1 ♖d3+ 40.♘e1 ♖e4+

White resigned
It was my first victory against a 2700 player. I have to say that playing with strong male players is very interesting for me and especially victory is satisfying.

5 Irina Krush

21 LANDMARK VICTORIES
QUEENS OVER KINGS



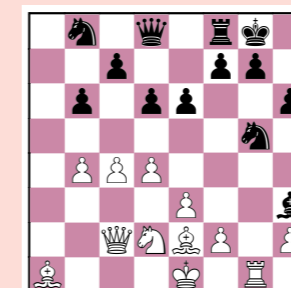
Irina Krush (born 1983 in Odessa, Ukraine) is the first - and currently only - American woman to earn the Grandmaster title, achieving it in October 2013 after a landmark performance at the Baku Open. She won her first U.S. Women's Championship at just 14 years old in 1998 and has claimed the national title a record eight times through 2020. A stalwart of the U.S. Women's Olympiad team since 1998, she helped secure team silver in 2004 and bronze in 2008 and 2024. Krush combines technical endgame skill with tactical grit, long admired as a leading figure in American women's chess. She will be inducted into the U.S. Chess Hall of Fame in October 2025.

E32

Irina Krush	2483
Liviu Dieter Nisipeanu	2678

Gibraltar 2011

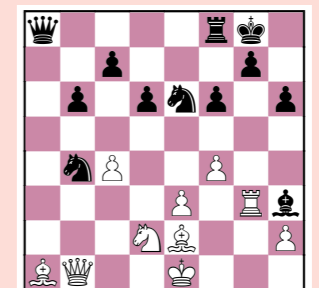
1.d4 ♘f6 2.c4 e6 3.♘c3 ♗b4 4.♖c2 0-0 5.a3 ♗xc3+ 6.♖xc3 h6 6...b6 7.♗g5 ♗b7 8.f3 h6 9.♗h4 d5 10.e3 ♘bd7∞. 7.e3 b6 8.♘f3 ♗b7 9.♗e2 d6 10.b4 ♘e4 11.♖c2 a5 12.♗b2 axb4 13.axb4 ♗xa1+ 14.♗xa1 ♘g5 14... f5 15.0-0 ♘d7 16.♗b2 ♘g5 17.♘d2±. 15.♘d2! ♗xg2 15...f5 16.0-0 ♘d7 17.♗b2±. 16.♗g1 ♗h3



17.d5! f6 17...e5 18.f4 ♘h7 19.♗g3 ♗c8 20.fxe5 dxe5 21.♗xe5±. 18.dxe6 18.f4!? ♗f5 (18...♘h7 19.♖g6+-)

19.♗d3 ♗xd3 20.♖xd3 ♘h7 21.♖g6 ♗e7 22.dxe6±. 18...♘c6 19.f4 ♘xe6 20.♗g3 20.♖g6 ♘xb4 21.♗c3 ♘c6 22.♖h5+-.

20...♘xb4 21.♖b1+- ♖a8



22.♘f2! ♘g5 23.fxg5 fxg5+ 24.♘g1+- ♗f5 25.♖b2?! 25.e4 ♗g6 26.♖b2 ♗f7 27.♗a3+- 25...♗f7 26.♗f3 ♘d3? 26...♘c2 27.♗xf5 ♖xa1+ 28.♖xa1 ♘xa1 29.♗d3±. 27.♗xd3 ♗xd3 28.♗xf7 ♘xf7 29.♖xg7+ ♘e6 30.♖xh6+ ♘d7 31.♖g7+ ♘c6 32.♖d4 ♖a5 33.♖xd3

Black resigned

4 Pia Cramling

21 LANDMARK VICTORIES
QUEENS OVER KINGS

B31	
Mikhail Ulybin	2556
Pia Cramling	2477

Stockholm 2005
Notes by Pia Cramling

They always used to ask me the opposite – how I felt playing against women, since for a long time I mostly competed against men. Honestly, I just felt normal playing against GMs or male opponents. When I was younger, I actually felt more stressed playing in women’s competitions, as I was usually one of the highest-rated players and not as accustomed to facing women. I’ve always enjoyed playing against stronger or higher-rated opponents more.

1.e4 c5 2.♘f3 e6 3.d4 cxd4 4.♗xd4 ♖c6 5.♗c3 ♗c7 6.f4 a6 7.♗b3 A slow move in the opening that my opponent had played before. Seemingly White is not trying to get an advantage, but rather wants to reach a position he knows and likes. Now we reach the ...♗b6 line in the Sicilian but with a tempo up for Black – so I was quite happy at this moment.
7...b5 8.♗d3 d6 9.♗e3 ♗f6 10.♗f3 ♗b7 11.0-0 White can castle long in similar positions, followed by the plan of g4-g5. However, then he has not wasted a tempo by playing ♗b3. Here, I think it would be too slow to play in similar fashion for White.

11...h5!? The first rather unusual move, but a modern way to play similar Sicilian positions and a move I like and always count on as Black in the opening. Now Black remains with her king in the center. If, instead, Black castles, then White can start an attack with g4-g5, a plan I wanted to avoid in this game. With ...h5 I also get the option to play ...♗g4 in the future or push the pawn further with ...h5-h4-h3. If White wants to avoid ...♗g4 with 12.h3, then I can answer 12...h4, creating a weakness on the g3 square.

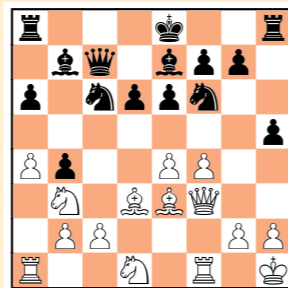
12.♔h1 White doesn’t want his bishop to be disturbed by ...♗g4. However, it is not likely the king is safer on h1 when Black has already played ...♗b7 – taking

a long look towards the white king – and with the rook still on h8.

12...♗e7 A normal move to develop the bishop. Generally, it is good to add another piece on the e-file, so the king on e8 feels safer if White plays his rook to e1.

13.a4 My opponent had been thinking a long time before he took this decision. It is an ambitious plan. When he realized that he cannot go for a kingside attack he is now ready to start playing on the queenside. His plan is to open the c-file with a later c2-c3.

13...b4 14.♗d1 Here we see another strength of my pawn thrust ...h5. At this moment Ulibin was no longer attracted by playing ♗e2 as the knight has no future on g3. My h-pawn will just kick the knight back.



14...d5! I wanted to react quickly with a break in the center, when the white knight is somewhat passive on d1 and before White has time to play c2-c3. The other pawn break ...e6-e5 had been played before in similar positions. I knew that during the game but preferred my plan as it looked stronger to open the position for the bishop on b7.

15.♗f2 In many similar positions it is a normal response to answer ...d5 with e5, trying to keep the center closed. But here Black has a strong follow-up after 15.e5 ♗g4 16.♗g1 g5!.



Pia Cramling (born 1963, Stockholm) is a Swedish Grandmaster – only the fifth woman to earn the GM title in 1992 via conventional norms. A dominant force in women’s chess during the 1980s and 1990s, she held world-number-one status on several rating lists in 1984. She twice won the European Women’s Individual Championship (2003, 2010) and has represented Sweden in Olympiads for over four decades. On Board 1 she earned individual gold medals in 1984, 1988 and again in 2022. Known for her calm strategic style and fierce longevity, Pia remains an inspiration across generations.

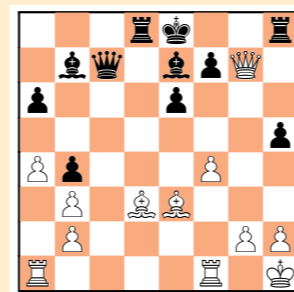
15...dxe4 16.♗xe4 ♗xe4 17.♗xe4? A mistake, but not easy to see. **17.♗xe4** was better when I had planned to play 17...f5 18.♗d3 ♗e5 19.♗e2 ♗xd3 and after 20.cxd3 the position is unclear with equal chances.
17...♗a5! 18.♗d4? Ulybin follows his plan, but... **18.♗e5** was necessary even if Black would get an advantage in the ending after 18...♗xe5 19.fxe5 ♗xb3 20.cxb3 h4 21.h3 ♗h5!. If White is not careful it can get even worse as in this line: 22.♗f4 ♗d8 23.♗e2 ♗f5 24.♗g4

g5!, with great play for Black even at the cost of the exchange.

18...♗xb3 19.cxb3 What is the right move here?

19...♗d8! This move is difficult to find without anticipating the coming combinational idea. My continuation is stronger than 19...♗d8 20.♗ad1 ♗xd4 21.♗xd4 ♗d8 although it would have given Black a more pleasant endgame.

20.♗xg7? A final mistake after which White is lost. Necessary was 20.♗c4 ♗xc4 21.♗xc4 h4 22.h3, with a small plus for Black in the endgame.



20...♗f6!! A wonderful move and the point behind letting White take on g7. 15 years earlier, in my game against Joel Benjamin in Stockholm 1990, I had the chance to play this combinational theme in a completely different position, although it was also a Sicilian game and I was Black. I missed this idea in that game, but as soon as the game was over, the winner of the tournament, GM Alexey Shirov, asked me why I had not played it. So, the thematic pattern remained in my mind and I was very pleased to get a chance to play it in another game, although I had to wait for a very long time.

21.♗xf6 ♗g8 White is in big trouble thanks to the newly opened g-file.

22.♗g1 There was no time to keep the bishop. **22.♗e2 ♗xg2+** **23.♔g1 ♗f3+** **24.♔f2 ♗g2+** **25.♔xf3 ♗c6** mate.

22...♗xd3 23.♗f2 ♗d2! 24.♗g3 24.♗h4 ♗d5 transposes.

24...♗d5! It is stronger to have the queen attacking g2 along the long diagonal behind the bishop.

25.♗h4 ♗b7 26.h3 Or **26.♗h3 h4!** and White’s defense collapses.

26...♗xg2+ 27.♔h2 ♗f1+
White resigned

3 Nona Gaprindashvili

21 LANDMARK VICTORIES
QUEENS OVER KINGS

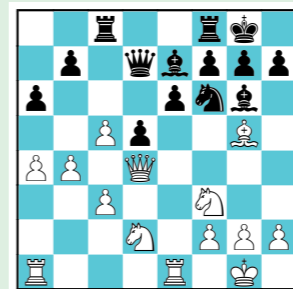
Nona Gaprindashvili (born 1941 in Zugdidi) is a Georgian chess legend and the first woman to be awarded the Grandmaster title in 1978. She became Women’s World Champion in 1962, holding the title until 1978 after five successful defenses. Known for her aggressive, dynamic playing style, Gaprindashvili was a pioneer, regularly competing in high-level “men’s” tournaments and defeating top male grandmasters. She led the Soviet team to numerous Olympiad victories and won countless individual accolades. Beyond her playing career, she has been an influential figure in chess promotion and remains an enduring symbol of female excellence in chess history. She was inducted into the World Chess Hall of Fame in 2013.



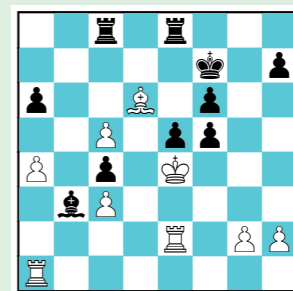
B51	
Nona Gaprindashvili	2405
Roman Dzindzichashvili	2595

Wijk aan Zee 1979
Analysis by Nona Gaprindashvili

1.e4 c5 2.♗f3 d6 3.♗b5+ ♗c6 4.0-0 ♗d7 5.♗e1 ♗f6 6.c3 a6 7.♗xc6 ♗xc6 8.d4 ♗xe4 9.♗g5 d5?! 10.♗bd2 ♗g6?! 11.dxc5 e6 12.♗a4+! ♗d7 13.♗d4 ♗c8 14.b4 ♗e7 15.a4 0-0



16.♗c4! dxc4 17.♗xd7 ♗xd7 18.♗xe7 ♗fe8 19.♗d6 b6 20.♗e5! ♗xe5 21.♗xe5 bxc5 22.bxc5 ♗c2 22...f6 23.♗e2 ♗b2-b6±, 23.♗e2 ♗b3 24.f4 f6 25.♔f2 ♔f7 26.♔e3 e5 27.f5 g6 28.♔e4 gxf5+



29.♔d5! f4 30.c6 ♗g8 30...♗ed8 31.♗f2 ♗g3+-. **31.c7 h5 32.♔c6 ♔e6 33.♗c5 h4 34.♔b7 h3 35.gxh3 f3 36.♗d2 e4 37.♗e1 f5 38.♗d6+ ♔e5 39.♗xa6 ♗c2 40.♗d4+ ♔d5 41.♗f6**
Black resigned

2 Vera Menchik



Vera Menchik (1906–1944) was the first and longest-reigning Women's World Chess Champion, holding the title from its inception in 1927 until her death. Born in Moscow to a Czech father and English mother, she moved to England in 1921, where her chess career flourished. Menchik dominated women's chess, winning seven world championship

tournaments. She also competed successfully against leading male players of her time, breaking gender barriers in elite tournaments. Known for her calm and strategic style, Menchik's legacy as a trailblazer in women's chess remains iconic.

She was the 16th inductee and the first woman to be inducted into the World Chess Hall of Fame in 2011.

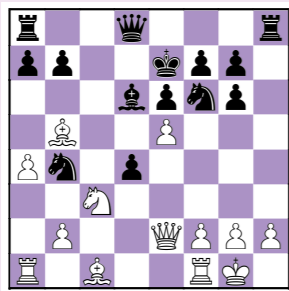
D17

Vera Menchik

Max Euwe

Hastings 1931

1.d4 d5 2.c4 c6 3.♘f3 ♘f6 4.♘c3 dxc4 5.a4 ♙f5 6.e3 ♘a6 7.♙xc4 ♘b4 8.0-0 e6 9.♘e5 9.a5 ♙e7 10.♘e5 0-0 11.♙e2 ♙c2 12.♘a2! ♙e4 (12...♘xa2?! 13.♙xc2±) 13.f3 ♙d5 14.♘c3±. 9...♙d6 9...♙e7 10.♙e2 h6 11.e4 ♙h7 12.♙d1 0-0 13.♙f4±. 10.♙e2 c5?! 10...♘bd5 11.f3 ♘b6 12.e4 ♙g6 13.♙b3 c5 14.♙e3±. 11.♙b5+ 11.e4 ♙g6 (11...cxd4? 12.exf5+-) 12.♘g6 hxg6 13.e5 cxd4 14.♙d1! dxc3 15.♙xd6±. 11...♙e7? 11...♙f8 12.e4 ♙g6 13.♙d1±. 12.e4 ♙g6 12...cxd4 13.exf5 dxc3 14.fxe6 fxe6 15.bxc3+-. 13.♘g6+ hxg6 14.e5 cxd4



15.♙d1! 15.exd6+?! ♙xd6 16.g3 a6∞; 15.h3 dxc3 16.bxc3 ♘bd5 17.exd6+

21 LANDMARK VICTORIES QUEENS OVER KINGS

B80

Maia Chiburdanidze 2510

Bent Larsen 2540

Wien 1993

Notes by Maia Chiburdanidze

I feel nostalgic for the old days. I am glad that I was fortunate to play during times when everything depended on one's own understanding and talent, when creativity was not suffocated by a multitude of computer variations, when emotions and beauty dominated over cold blood and calculations. Precisely for these reasons the following game is very dear to me.

1.e4 c5 2.♘f3 e6 3.♘c3 ♘c6 4.d4 cxd4 5.♘xd4 d6 6.♙e3 ♘f6 7.♙e2!?

This idea came to me over the board. Everything fits in harmoniously: after long castling the black queen will feel uncomfortable, White is ready to go ahead with g2-g4 and the light-squared bishop will find its place on the f1-h3 diagonal.

7...e5 After the natural 7...♙e7 8.0-0-0 ♙c7 9.g4 ♘xd4 10.♙xd4 a6 11.g5 ♘d7 12.f4 b5 13.h4 ♘b6 (13...♙b8!?) 14.♙f2 ♙b7 15.♙g1 d5 16.exd5 ♘xd5 (16...b4 17.d6 ♙xd6 18.♘e4) 17.♘xd5 ♙xd5 18.f5 White gained an advantage in Mi.Adams 2680 - H.Molvig 2230, Koge 1997.

8.♘b3 ♙e7 Stronger is 8...♘g4. However, after 9.♙d2 or 9.0-0-0 ♘xe3 10.♙xe3 White has the more pleasant position.

9.f3 0-0 In case of 9...a5 will follow 10.0-0-0 a4 11.♘d2 a3 12.b3 0-0 13.♘c4. Bad is 9...d5? because of 10.exd5 (10.♘xd5 ♘xd5 11.0-0-0!) 10...♘xd5 11.0-0-0 ♙e6 12.♘xd5 ♙xd5 13.c4+-.

10.0-0-0 ♙e6 Not scary is 10...a5, because of 11.a3! a4 12.♘d2 d5 13.exd5 ♘xd5 14.♘xd5 ♙xd5 15.♘c4 ♙e6 16.♘b6 ♙a5 17.♙c4±.

11.♘c5 The alternative way to fight for control over the d5 square is 11.g4 with the standard advance of pawns

♙f8 18.♙f3±. 15...♙c7 16.exf6+ gxf6 17.g3+- a6 18.♙e3 ♙b6 19.♙c4 ♙f8 20.♘e4 ♙g7 21.♙ac1 ♙h5 22.♙f4 e5 23.g4 ♙h8 24.♙g3 ♙e7 25.♘d2 25.h4 ♘c6 26.♙f3 ♙ac8 27.h5+-.

25...♙he8 26.♙e4 ♙d7 27.♘f3 ♙c6 28.♙xc6 ♘xc6 29.♙d5 ♙ac8 30.♙e4 ♙c7 31.♘e1 31.g5 ffg5 32.♙xc6 ♙xc6 33.♙xc6 bxc6 34.♙xe5+-.

31...♙ec8 32.♘d3 ♘e7 33.♙xc7 ♙xc7 34.♙f1 34.♘xe5 fxe5 35.♙xe5+ ♙f8 36.♙xc7+-.

34...♙c4 35.♙xb7 ♙xa4 36.♙c1 g5 37.f3 ♙a2 38.♙e1 a5 39.♙d2 f5 40.gxf5 a4 41.♙e1 a3 42.b4 ♙f6 43.♙a6 g4 44.♙c4 ♙xd2 45.♙xd2 gxf3 46.♘c5 ♙xf5 47.♙xf7 ♙d8 48.♙e6+ ♙f6 49.♙g4 ♘d5 50.♙xf3 ♘xb4 51.♙e4 ♙e7 52.♘d3 ♘a2 53.♙c6+ ♙g5 54.♙g6+ ♙h4 55.♘xe5 ♘c3 56.♙d3

Black resigned

1 Maia Chiburdanidze

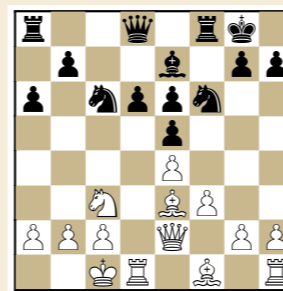
21 LANDMARK VICTORIES QUEENS OVER KINGS



Maia Chiburdanidze (born 1961 in Kutaisi, Georgia) was the Women's World Champion from 1978 to 1991 and became the second woman ever to be awarded the Grandmaster title by FIDE in 1984. Throughout 1980s and early 1990s, she successfully competed in predominantly "men's" tournaments, all while defending her Women's World Champion title on four occasions. She won the Olympic team gold nine times, earning countless individual accolades along the way. Chiburdanidze retired from competitive play in July 2012 and was inducted into the World Chess Hall of Fame in 2014.

on the kingside. Nevertheless, I was more attracted to the idea that happened in the game.

11...a6 12.♘xe6! fxe6



13.g3! Once the bishop gets to h3, it will hit targets along the h3-c8 diagonal.

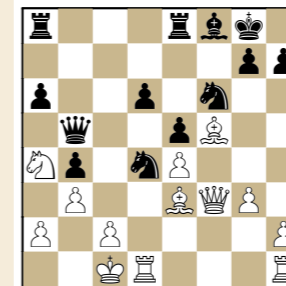
13...♙e8 Maybe better was the more active 13...d5, when after 14.exd5 (Also possible is 14.♙h3 d4 15.♙xe6+ ♙h8 16.♙f2 and Black still has to prove that

he has compensation for the sacrificed pawn.) 14...exd5 15.f4 e4, although White still has an advantage after 16.♘xd5 ♘xd5 17.c4, or after the calm 16.♙f2.

14.♙h3 ♙f8 15.f4! By means of f4-f5 White starts the fight for the d5 square. 15...b5 16.f5 b4 Bad is 16...♙a5? 17.fxe6 b4 18.♙c4 bxc3 19.e7+ ♙h8 20.exf8♙+ ♙xf8 21.♙xc6! winning.

But interesting was 16...d5 17.exd5 exd5 18.♙g2 ♘d4 19.♙d3 ♙c5. Maybe for that reason White should not have rushed with 16.f5 and instead used the prophylactic 16.♙b1 ♙a5 17.♙g2! with the same ideas.

17.♘a4 ♙a5 18.b3 ♙b5 19.♙f3 Very interesting is the computer style continuation - 19.♙f1! ♙xe2 20.♙xe2 with a clear advantage. 19...exf5 20.♙xf5 ♘d4



21.♙xd4!?

How hard it is for the human to let pass such an opportunity! But the cold-blooded computer proves that only 21.♙xd4 exd4 22.♙hf1 keeps the advantage.

21...exd4 22.♙xd4 ♙e7?! Erroneous would be to play 22...♘d7 23.c4 ♙b7 24.♙h5. However, the resolute 22...g6!! 23.♙xf6 gxf5 24.exf5 ♙a7 offered Black the chance to fight for equality.

23.♘b6!?

Possibly an even bigger advantage was attainable after 23.g4 with an immediate assault on the kingside. But I wanted to include the offsite knight before starting decisive actions.

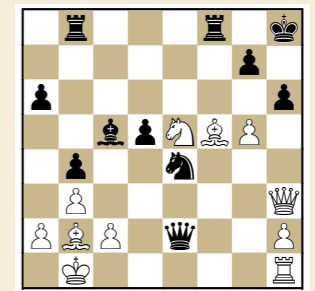
23...♙ab8 23...♙ad8. 24.♘c4 ♙f8 25.♙b1! Necessary prophylaxis! Now all the pieces are placed in their best positions.

25...♙h8 Obviously not 25...g6 because of 26.♙e6+ and g4; or 25...♘d7 26.♙h5 winning. That's why Black is trying not to weaken the a1-h8 diagonal.

26.g4! The start of the victory march! 26...d5 It is already difficult to suggest anything better for Black.

27.♙h3! h6 28.♘e5 ♙c5 29.♙b2! Simple 29.♘g6+ ♙g8 30.♙e6+ ♙h7 31.g5 was also winning. But keeping the beautiful bishop is more aesthetically pleasing.

29...♙e2 30.g5 ♘xe4



31.♙xh6+!! gxf6 32.♘f7+ ♙g8 33.♘xh6 Mate. I am grateful to the distinguished maestro who graciously allowed me to execute such a finale over the board!