

C
H
E
S
S

A
D
V
O
C
A
T
E

V
O
L
U
M
E

7

N
U
M
B
E
R

1

Y
E
A
R

2
0
2
2

Chess
Advocate



Television Edition

Inside this Edition

Annotated Games by
FM Alex King
Michael Robertson &
Greg Turner



Also Inside

Crossword by David Saks
Article by David Emerling
Chess Problems by
NM Graham Horobitz
FM Alex King &
Carlos Sims

10¢

CHESS ADVOCATE

Chess Advocate, Volume 7, Number 1, Television Edition, October 2022
Chess Advocate is not affiliated with Memphis Historic Chess Foundation,
Memphis Chess Club, Memphis Chess Company, LLC, Mississippi Chess
Association, Tennessee Chess Association, United States Chess
Federation, CXR (Chess eXpress Ratings) or any organization
 mentioned or linked to in this newsletter/magazine.
Chess Advocate is the publication of Dwight Weaver, DKW@Juno.com.
 Noteworthy is the Wise Chess Club in Southaven, MS.



2020, 2021 & 2022 Chess Journalists of America Award Winner
 "Best Club/Local Newsletter – Chess Advocate"

https://www.chessjournalism.org/2020-chess-journalists-of-america-awards?fbclid=IwAR0TcP1FtRwxgJ25-Y3X5nalRvL-41nQMEDNuxZ6um91Ltugn_Pq9E5kHro

<https://www.chessjournalism.org/2021-cja-award-winners>

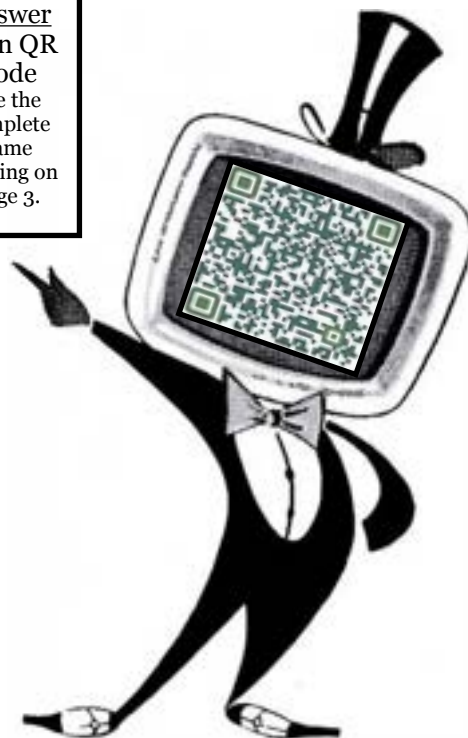
<https://www.chessjournalism.org/2022-cja-awards-winners>



Front
 Cover
 Chess
 Problem
 Black to
 Move &
 Draw



Answer
 Scan QR
 Code
 See the
 complete
 game
 starting on
 page 3.





Super Summer Swiss
Memphis Chess Club

7/3/2022, Round 2 / Board 1

White: Graham Horobetz - 2331
Black: Kenneth Turner - 1966

Giucco Piano

This game has its flaws, as most games do, but it is interesting as black has a forced draw at one point in the game, a double puzzle of sorts, and a forced mate if white tries to defend against the draw. Unfortunately, though I did see the draw attempt, I overlooked white could not defend and the moment missed me.

1.e4 e5 2.Nf3 Nc6



3.Bc4 Bc5 4.c3 d6



5.d4 exd4 6.cxd4 Bb4+



7.Kf1



Here white chose an unusual, more aggressive move giving up the castle in exchange to threaten 8.d5 then 9.Qa4+ to possibly win the black bishop.

The simple defense is 7...Ba5 8.d5 Ne7 9.Qa4+ c6. Unfortunately I played something else.



7...Qd7 8.a3 Ba5



9.b4 Bb6 10.Bb5



Here it is hard to stop 11.d5 by white.

10....d5 is playable for black, but leads to many ugly threats. My idea as black was to give up the c6 knight in exchange for some lead in development and bringing my king's rook into play while white could not do the same.



10...a6 11.Ba4 a5



12.d5 axb4 13.dxc6 bxc6



14.axb4 Ne7 15.Bb2 o-o



16.Nbd2 Ba6+ 17.Kg1



Even down the knight, I am not completely unhappy in the position.

17...Ng6 18.Nf1 Nf4



19.Ng3



Here is the key “puzzle” position in which black can force a draw. Though we both saw the draw, Graham admitted he was unsure if it was forced. He likely would have seen that it was, if I had played the correct move, which I will explain at the end. Unfortunately, I did not see it was forced and instead played...

19...Qg4 20.Nd4 Qxd1+



21.Rxd1 c5 22.bxc5 Bxc5



23.h4 Bc4 24.Ra1 Ne6



25.Ndf5 f6 26.Bd7 Rxa1+



27.Bxa1 Nf4 28.Bd4 Bb4



29.Kh2



Trading down pieces is weak if you are already down material. Correct theory is to trade off pawns looking for a draw, which I had already missed. I could have likely resigned after **29.Kh2**, but I played it out valiantly, or pointlessly.

29...g6 30.Be3 Nd3



31.Nd4 Ne5 32.Be6+ Bxe6



33.Nxe6 Rc8 34.f3 c5



35.Nf4 Nc4 36.Bc1 Kf7



37.Nd5 Ke6 38.Ne2 Bd2



39.Rd1 Bxc1 40.Rxc1 Ne5



41.Nef4+ Kf7 42.Rb1 Rd8



43.Rb7+ Rd7 44.Rb8 g5



45.Nh5 gxh4 46.Nhxf6 Ra7



47.f4 Nd3 48.Rh8 Ra2



49.Rxh7+ Kg6



The end is near.

50.f5+ Kg5 51.Rg7+ Kh6 52.Rg6# 1-0



Let us look back at the game after move **19.Ng3** below, which is the featured position on the cover of this newsletter. Black to move and draw.



The correct move for black would be 19...Qh3.



White must capture 20.gxh3 allowing the draw by repetition.



20...Nxh3+ 21.Kg2 Nf4+ 22.Kg1, etc.



20.Qf1 is an overwhelming material loss.



If 20.Ne1



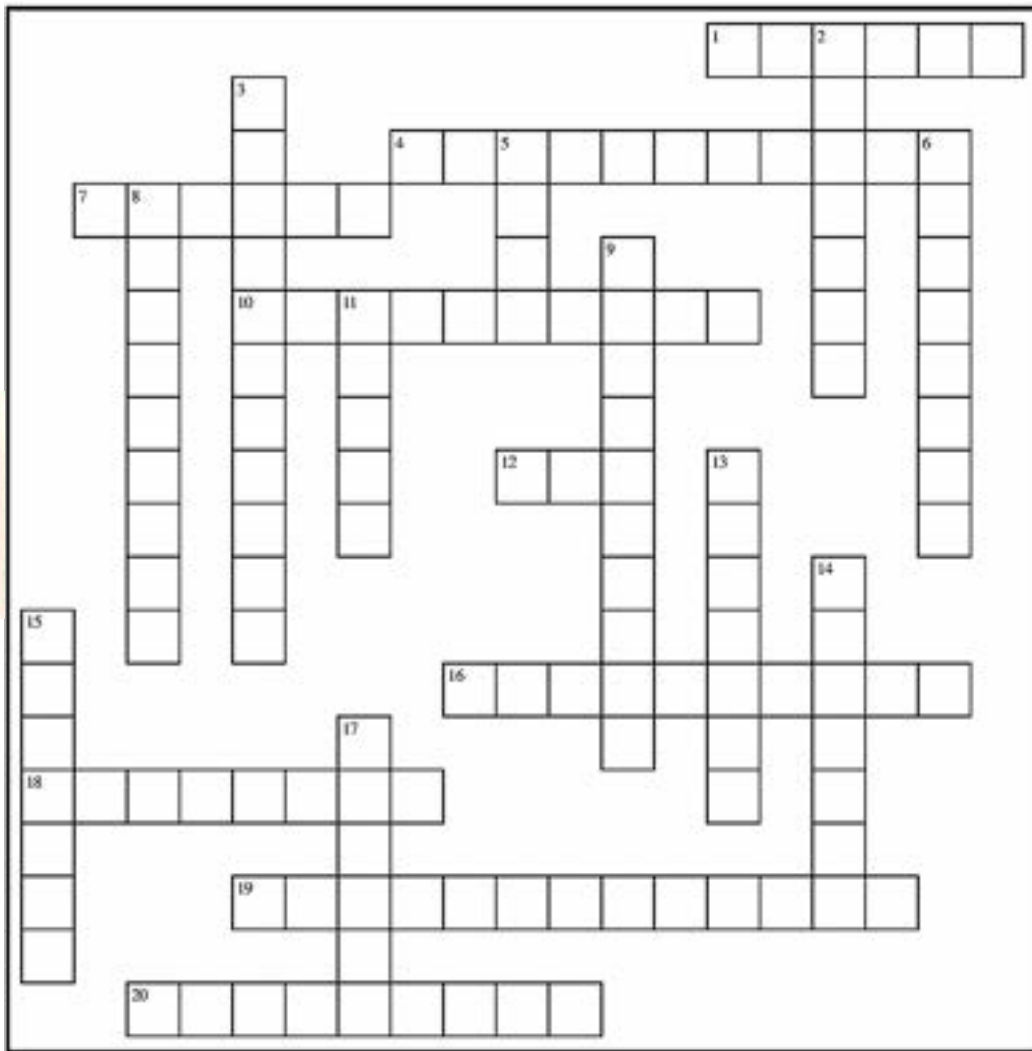
then 20...Qxg2+ 21.Nxg2 Nh3#!



It was a funny chess moment as we were reviewing the game at the board Graham had sensed something wrong with the position after 20.Ne1. Graham, looking at an engine on his phone, he had a surprised expression; at the exact same moment IM Ron Burnett casually walking by said, "It's smothered mate." And kept walking.

Premier Tournaments



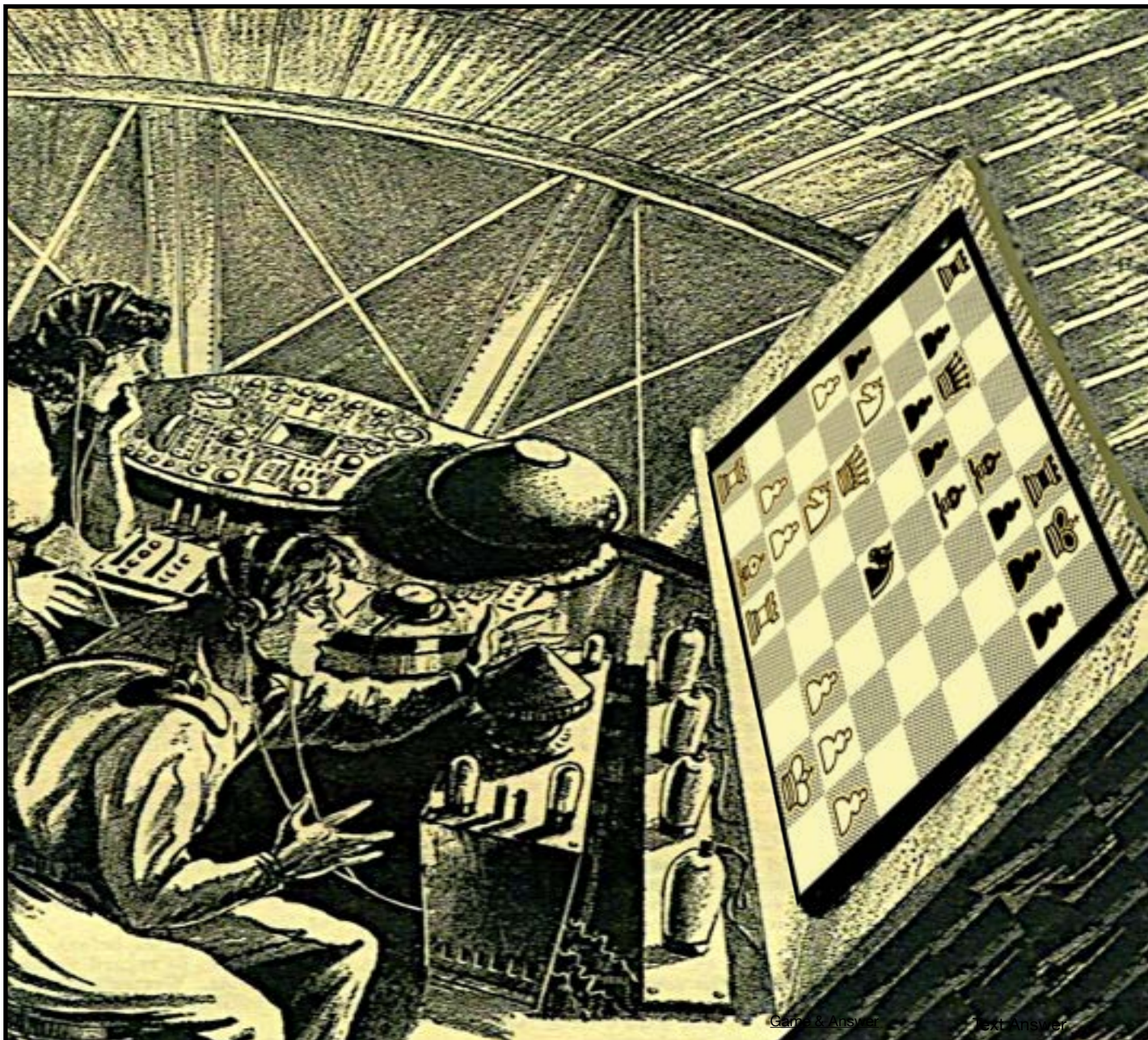


Across

1. A chess problem theme in which, at some point in the solution, a white pawn on its starting square makes each of its four possible moves (forward one square, forward two squares, capture to the left, capture to the right).
4. If the theme and setting of a particular problem has already appeared in an earlier problem without the knowledge of the later composer, the problem is said to be this.
7. A kind of doubling in which one piece moves along a line allowing a second to move onto the same line in front of it; this second piece then moves in the opposite direction to the first. Named after Henry Turton.
10. A problem in which black promotion defenses to all possible pieces are answered by a promotion of the same white piece—an extreme form of Allumwandlung.
12. A move that almost solves a problem, but is defeated by a single black defense, as opposed to the key (which actually does solve the problem).
16. A problem in which no pawns are in the initial position.
18. A problem with the stipulation "White to move and checkmate Black in two moves against any defense".
19. A chess problem theme in which the solution includes pawn promotions to all possible pieces (in orthodox chess, to bishop, knight, rook and queen; in fairy chess possibly to fairy pieces).
20. In general, the movement of one piece so that another can move to a particular square.

Down

2. A pair of pieces, where the front piece moves away to discover an attack from the back piece. For example, if a white knight stands between a white rook and the black king, moving the knight – that is, "firing" the what ? – results in check.
3. The interference of one black piece by another like-moving one on the same line (if the pieces are on different lines, it is a Holzhausen).
5. Two or more problems that are slight variations on each other, often composed by the same person. The variation is usually brought about by adding, removing or moving a piece in the initial setup.
6. A maneuver in which two pieces are placed on the same line (rank, file or diagonal) such that they support each other.
8. To reverse a capture, or a move that reverses a capture. Used in describing retrograde analysis.
9. Chess played with non-orthodox rules. Examples are circe, maximummers, problems with unorthodox pieces (fairy pieces) and problems with unorthodox boards (such as cylindrical boards, or grid boards).
11. A problem in which the key provides no threat, but instead puts Black in a position of zugzwang, where every move leads to a mate.
13. To create a flight square, or a move that creates a flight square.
14. Said of a problem that is an adaptation of an earlier one (it may have been altered to improve its economy or to eliminate a cook).
15. The play following a try, as opposed to set play and post-key play.
17. A kind of doubling in which one piece moves along a line allowing a second to move onto the same line behind it; the first piece then moves again in the same direction as before. Named after Erich Zepler. **Answers on page 24**



White: NM Graham Horobetz

Black: Keith Tomes

Event: Memphis Chess League 2 (aka 8 Slices of Pie)

Date: 4-14-2022, Round: 7 - 1-0

White to move and gain a winning advantage.

Forsyth-Edwards Notation-FEN:

r4rk1/1pq1bppp/2ppb3/pN6/P1Q1n3/2N5/1PP2PPP/R1BR2K1 w KQkq - 0 1

When viewing in PDF click the link below or scan QR Codes.

<http://mid-southchessadvocate.blogspot.com/2022/09/graham-horobetz-vs-keith-tomes-and.html>

Game & Answer



Text Answer



Annotation Time with FM Alex King



Mississippi Scholastic Individual Championship

12/27/2022, Round 5

White: Diego H. Delgado - 1365
Black: John Wesley Ozier - 1362

Italian Game

This was the final round of the Mississippi Scholastic Individual Championship. In 2020 Diego won the Grade K-5 section of this tournament, qualifying for the Rockefeller National Tournament of Elementary School State Champions. This year, as a 7th grader he was playing in the Grade 6-8 section, the winner of which would qualify for the Barber National Tournament of Middle School State Champions. **1.e4**



After having beaten John Wesley's brother William in the previous round, Diego was now the only player with 4.0/4, while John Wesley was the only player with 3.5/4. Diego therefore had effective draw odds in this game, meaning that even if he drew, he would still be guaranteed clear first place.

He decided to play solidly and not take any big risks.

1...e5 2.Nf3 Nc6



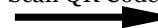
3.Bc4 Nf6



Before the game Diego was expecting that he would reach this variation of the Italian Opening. To prepare for it, I told him to review a training game that we played in one of our lessons, where I used the maneuver Nb1-d2-f1-g3 to generate kingside play against Black's castled king. He was able to use the same maneuver in this game, and although it did not lead to any kingside attack, it gave him helpful direction in the early middlegame.

2022 MS Scholastic
Individual Championship,
February 27, 2022, Round 4.
William Ozier vs Diego Delgado
Result: 0-1

Scan QR Code



4.d3 Bc5 5.O-O h6



6.Be3 Bb6 7.Nbd2 d6



8.h3 Be6 9.Bb3 O-O



10.c3 d5 11.Bxb6 axb6



12.a3 dxe4 13.dxe4 Bxb3



14.Qxb3 Re8 15.Rfe1 Qe7



16.Nf1 Rad8 17.Ng3



White's knight maneuver is complete, but in the meantime Black has also played sensible moves, and the position remains equal.

17...Qc5 18.Qc2 Nd4



19.Nxd4 exd4 20.Rac1 dxc3



Riskier but more ambitious would be 20...d3!? 21.Qd2 when Black's passed pawn could in the worst case become overextended and weak, or in the best case cramp and tie down White's pieces.



21.Qxc3 Qxc3 22.Rxc3 c6



23.f3 Nd5 24.Rd3 Nf4



25.Rxd8 Rxd8



White has drifted into a slightly passive position, but it is still defensible with careful play.

26.Ne2 Ne6 27.Nc3 Rd2



28.Re2 Rd3 29.Kf1 Nf4



30.Rc2 b5 31.Ne2 Rd1+



32.Kf2 Nd3+ 33.Kg3



33.Ke3? Ne1! winning the g2-pawn.



33...Rb1 34.Rc3 Rxb2



35.Rxd3 Rxe2



The endgame turns out to be the most interesting phase of this game.

36.Rd7?



Remaining down a pawn. Instead 36.Rd8+! Kh7 37.Rd7 would win back the pawn,



e.g. 37...Re3 38.Rxf7 Rxa3 39.Rxb7 with an unclear position.



36...Ra2 37.Rxb7 Rxa3



38.Rb6 Rc3 39.Kf2 Rc4



40.Ke3 Rc2?



Black should not be looking to trade one of his strong passed pawns for White's weak g2-pawn.

40...g6!? would retain good winning chances.



41.Kd3 Rxc6 42.Rxc6 Rf2



43.Ke3 Rb2 44.Kd3 Kh7



45.e5 Rb3+ 46.Ke2 Rb2+



47.Ke3 b4 48.Rc7 Kg6



49.Kf4 b3 50.Rc6+?



White's rook should remain on the seventh rank with 50.Rb7!?



50...f6?



Correct was the aggressive 50...Kh5!



51.e6 Re2 52.Rb6 b2



53.Kg3 Kg5 54.Rb5+ f5



58.Rg2 h5 59.Rf2?



55.e7 Rxe7 56.Rxb2



59.Rd2!? Re3

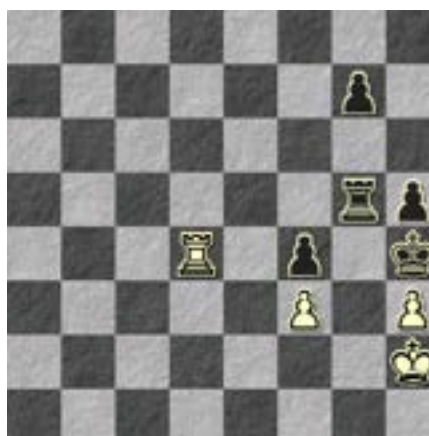


With both of Black's passed pawns traded off, White is within reach of a draw, but further winning chances for Black soon arise.

56...f4+ 57.Kh2 Kh4



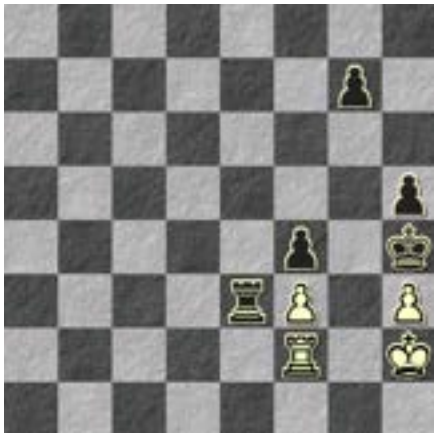
60.Kg2 would prepare to meet 60...Re5
61.Kh2 Rg5 with 62.Rd4! preventing ...Rg3.



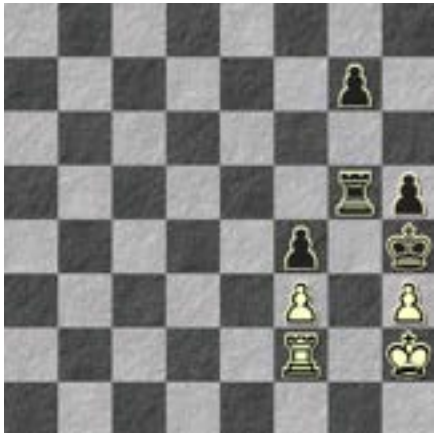
59...Re5?



59...Re3! would put White in zugzwang.



Since after 60.Kg2 Re5! 61.Kh2 Rg5 Black will continue with ...Rg3 winning a second pawn.



60.Rg2?



Again the right defense was 60.Rd2!? Rg5 61.Rd4! preventing ...Rg3 and holding a draw.



60...Rg5!



Now in order to prevent ...Rg3 Diego decided to trade rooks, but the pawn endgame is also losing for White.

61.Rxg5 Kxg5 62.Kg2 h4?



Spoiling the win by making it impossible for Black to create a passed pawn with ...g5-g4.

Black should activate his king first: 62...Kf5 63.Kf2 Ke5



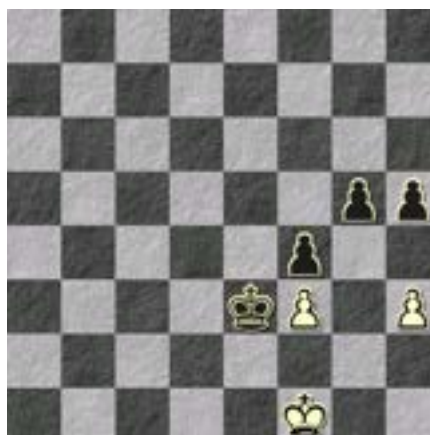
64.Ke2 Kd4 65.Kd2 g5



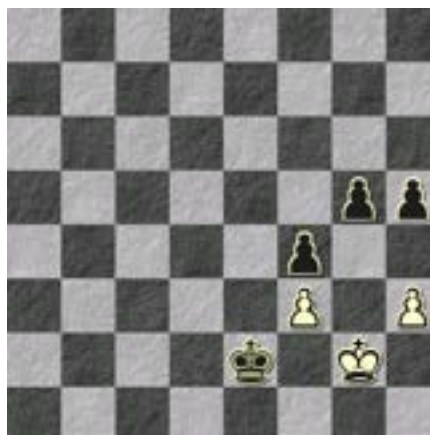
66.Ke2 Kc3 67.Ke1 Kd3



68.Kf2 Kd2 69.Kf1 Ke3



70.Kg2 Ke2 and White loses the f3-pawn.



63.Kf2 Kf5 64.Ke2 Ke5



65.Kd3 Kd5 66.Kc3 Kc5



67.Kd3 Kd5 68.Kc3 g6



69.Kd3 g5 70.Kc3

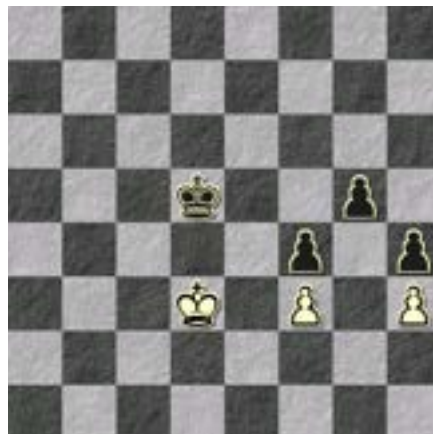


Black's reserve tempi ...g6 and ...g5 do not help him, since he is still unable to invade on the e4-square, which is controlled by White's pawn.

70...Kc5 71.Kd3 Kb5?



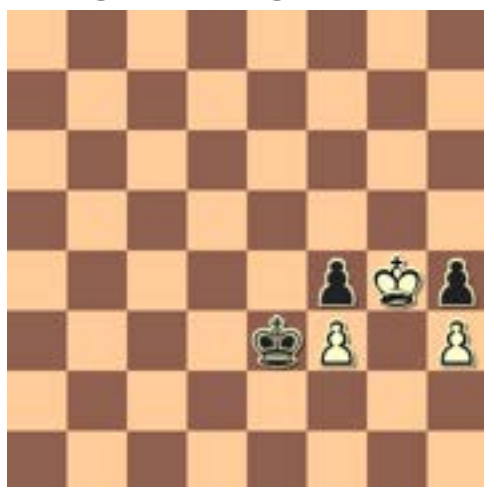
In time trouble, Black makes a fatal miscalculation. Instead he had to accept the draw with. 71...Kd5



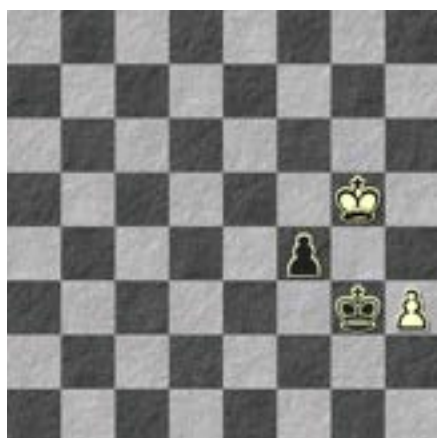
72.Ke4 Kc4 73.Kf5 Kd3



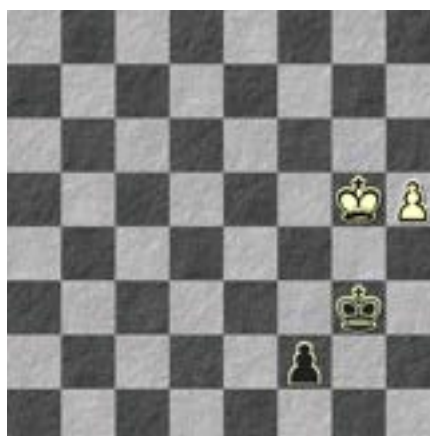
74.Kxg5 Ke3 75.Kg4! 1-0



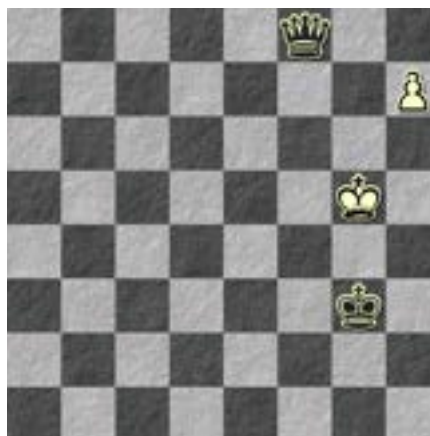
The move John Wesley missed in his calculations. He had only considered 75.Kxh4? Kxf3 76.Kg5 Kg3



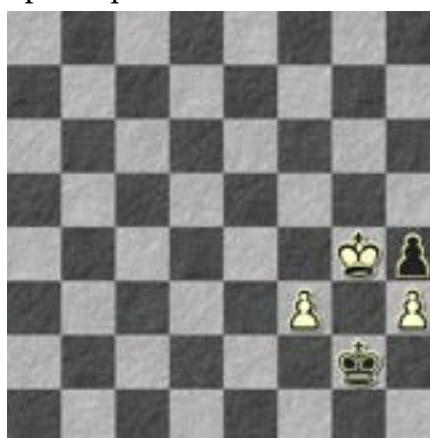
77.h4 f3 78.h5 f2



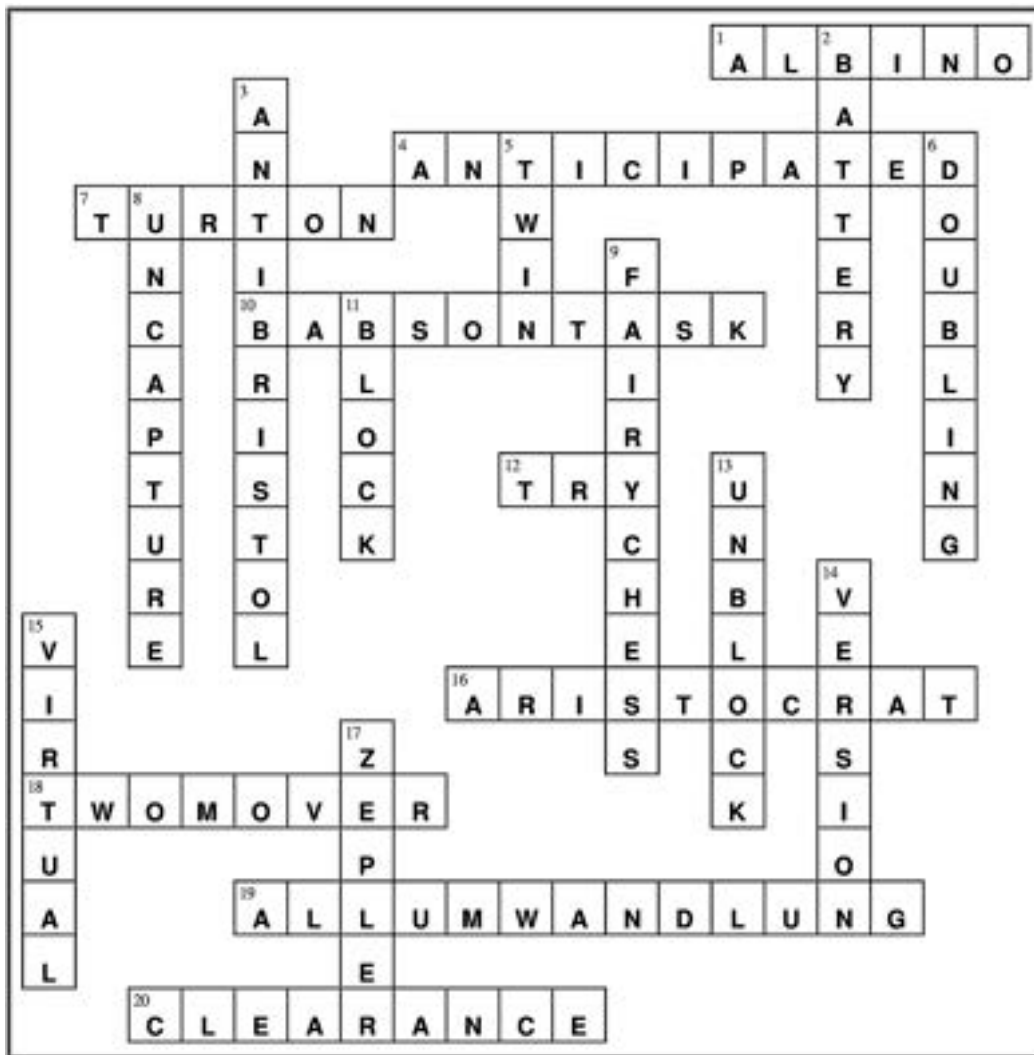
79.h6 f1=Q 80.h7 Qf8 and Black wins.



After the move in the game **75.Kg4!** Black lost on time, but his position is losing anyway: 75...Kf2 76.Kxf4 Kg2 77.Kg4 and the f-pawn queens.



A rich and hard-fought game by both players. This brought Diego to a perfect 5.0/5 in the tournament! I wished him best of luck as he later represented Mississippi in the 12th Annual Dewain Barber National Tournament of Middle School State Champions from July 30-August 2, 2022 in Rancho Mirage, California.



Across

1. A chess problem theme in which, at some point in the solution, a white pawn on its starting square makes each of its four possible moves (forward one square, forward two squares, capture to the left, capture to the right).
4. If the theme and setting of a particular problem has already appeared in an earlier problem without the knowledge of the later composer, the problem is said to be this.
7. A kind of doubling in which one piece moves along a line allowing a second to move onto the same line in front of it; this second piece then moves in the opposite direction to the first. Named after Henry Turton.
10. A problem in which black promotion defenses to all possible pieces are answered by a promotion of the same white piece—an extreme form of Allumwandlung.
12. A move that almost solves a problem, but is defeated by a single black defense, as opposed to the key (which actually does solve the problem).
16. A problem in which no pawns are in the initial position.
18. A problem with the stipulation "White to move and checkmate Black in two moves against any defense".
19. A chess problem theme in which the solution includes pawn promotions to all possible pieces (in orthodox chess, to bishop, knight, rook and queen; in fairy chess possibly to fairy pieces).
20. In general, the movement of one piece so that another can move to a particular square.

Down

2. A pair of pieces, where the front piece moves away to discover an attack from the back piece. For example, if a white knight stands between a white rook and the black king, moving the knight – that is, "firing" the what? – results in check.
3. The interference of one black piece by another like-moving one on the same line (if the pieces are on different lines, it is a Holzhausen).
5. Two or more problems that are slight variations on each other, often composed by the same person. The variation is usually brought about by adding, removing or moving a piece in the initial setup.
6. A maneuver in which two pieces are placed on the same line (rank, file or diagonal) such that they support each other.
8. To reverse a capture, or a move that reverses a capture. Used in describing retrograde analysis.
9. Chess played with non-orthodox rules. Examples are circe, maximummers, problems with unorthodox pieces (fairy pieces) and problems with unorthodox boards (such as cylindrical boards, or grid boards).
11. A problem in which the key provides no threat, but instead puts Black in a position of zugzwang, where every move leads to a mate.
13. To create a flight square, or a move that creates a flight square.
14. Said of a problem that is an adaptation of an earlier one (it may have been altered to improve its economy or to eliminate a cook).
15. The play following a try, as opposed to set play and post-key play.
17. A kind of doubling in which one piece moves along a line allowing a second to move onto the same line behind it; the first piece then moves again in the same direction as before. Named after Erich Zepler.

White: NM Graham Horobetz

Black: FM Alex King

Event: Memphis Chess Club Weekly Open G/25;d5

Date: 08/27/2022, Round: 2, Position: Black to move with advantage.

Forsyth-Edwards Notation-FEN: 46rk/1q2p2p/p2p1nP1/1p3N2/7Q/7P/4R1RK/2r5 w KQkq - o 6

Chess Problem

bit for a King



Answer & Game



Text Answer



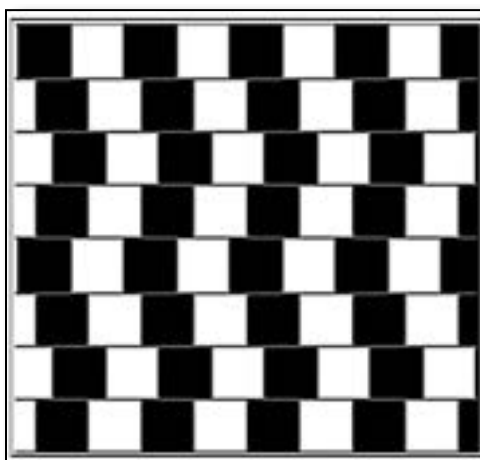
When viewing in PDF click the link below for the answer & complete game.

<https://share.chessbase.com/SharedGames/share/?p=h9kxCP43HVMRjrlviVzrs6lyGgbJJ7VKn5EP6lrwm7wzvHS1wc5IANIYYuUpPa>



I know this has happened to many of us while driving our car. We intend to change lanes. We look in our rearview mirror – it looks clear. We look in our sideview mirror – it looks clear. We turn our blinker on. Then, before committing to changing lanes, we take a quick glance over our left shoulder (like we were taught in Driver's Education class) only to be stunned to see that there is a car right next to us that we never saw! How long has that car been there? For the next 30 seconds our heart beats like a hummingbird. That car was in our blind spot.

Neuroscientists have long known that our brains have a certain bias to see objects in a particular way. Many optical illusions are designed with that bias in mind. Our brains are wired to think more vertically than horizontally. The below optical illusion somewhat illustrates this point. We can readily see that the black squares are not vertically aligned but it's not so obvious that the horizontal lines are perfectly level and evenly spaced just as they are on a chess board. They look slanted, but they're not.



We sit at the chess board with our opponent sitting opposite us. His forces are aligned directly opposite our forces. The game begins. His pieces move toward ours while ours move toward his. Forward, march! We look for open files. We frequently position our rooks to take advantage of those open files. Can we penetrate into his position? Our mental bias is already at work while our blind spot looms in the dark recesses of our mind.

We are mostly thinking *vertically*!

Many opening traps are based on this blind spot. For instance, in the Slav Defense, there is this variation: 1.d4 d5 2.c4 c6 3.Nc3 Nf6 4.Bg5 Ne4 5.Nxe4 dxe4.



According to the Lichess database of non-master games, the above position has been reached over 12,600 times. In over half of those games, white has blundered with 6.e3? Black replies with 6...Qa5+ and it's, "Bye, bye, bishop!" Yet, black misses this opportunity in nearly a third of the games. The horizontal blind spot works both ways. You might be thinking, "Sure, non-masters might play this way, but a master would never make this mistake." You'd be wrong! In [Attila Kovacs \(2365\) vs Peter Horvath \(2380\)](#), white stumbled into this "trap" and black didn't even realize it. They both missed it!

I'm sure many of you are familiar with other opening traps with this common theme – the queen check with the hanging piece on the opposite side of the board. It doesn't just happen in the opening. It can happen in middle and endgame positions, as well.

Those of you who are familiar with the Cambridge Springs Defense probably know the following trap. It even has a name, the *Fly in the Ointment Trap*. 1.d4 d5 2.c4 e6 3.Nc3 Nf6 4.Bg5 Nbd7 [There's an interesting trap from [this position](#), *The Elephant Trap*, by the way – but, I digress.] 5.Nf3 c6 6.e3 Qa5 7.Qc2 Ne4 8.Bd3? Nxe3 9.Nxe3 dxc4. The blind spot strikes again! White's bishop is under attack but so is the hanging knight on the other side of the board. White can't save them both.

Fly in the Ointment Trap

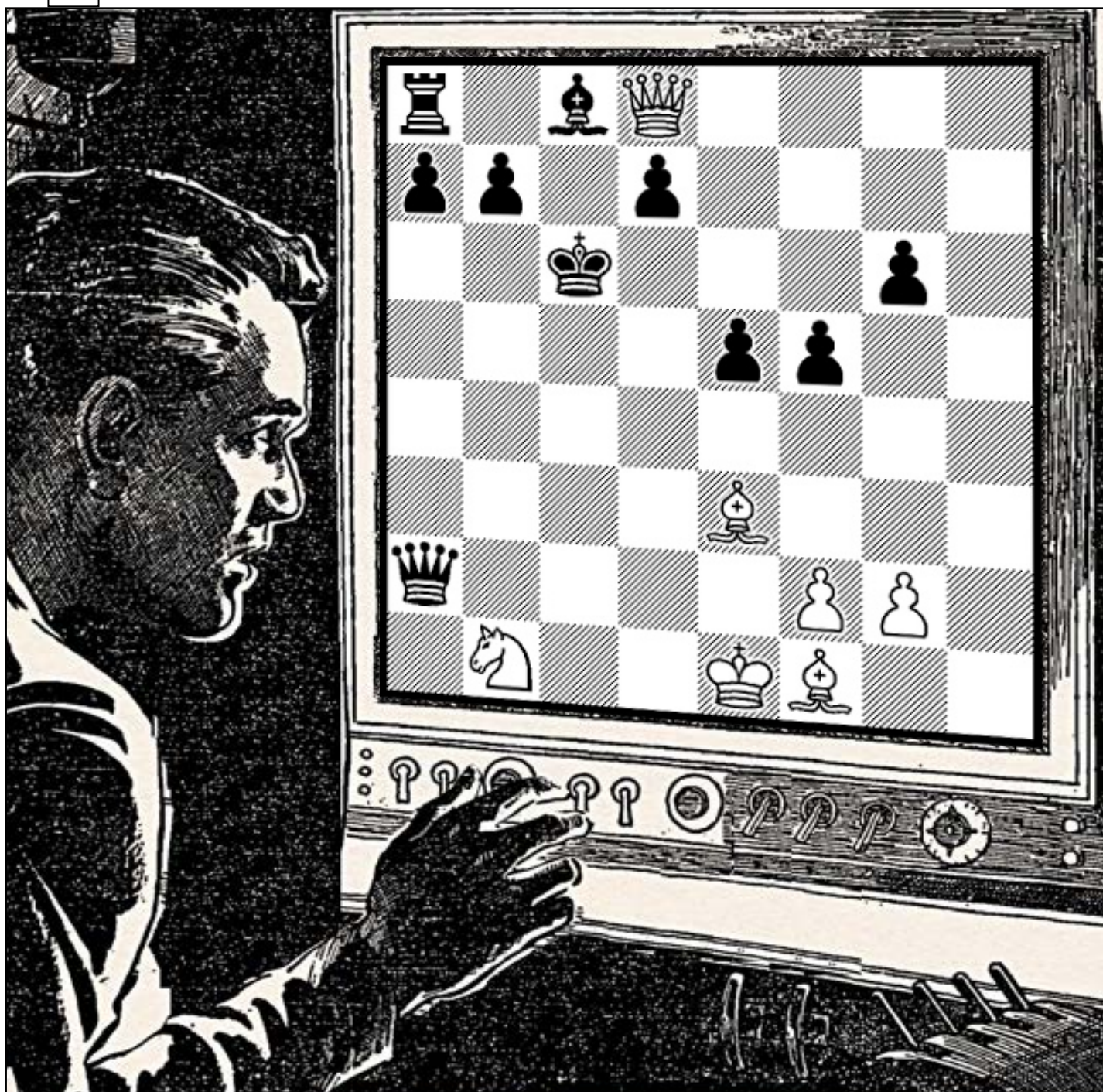


The Elephant Trap



One technique that some chess instructors use is it to have the student play a few games with the board turned 90-degrees. The thinking is that the player will see these sideways attacks more readily and that it will help eliminate their vertical bias. This also explains why observers, often watching from the side, see these types of attacks quicker than the actual players at the board.

Moral of the story: Check your blind spot!



White: Carlos Sims
 Black: Falilou Keita
 Event: Memphis Chess League - Pizza Time
 Date: 02-27-2022
 Round: 4
 White to move and gain advantage.
 Forsyth-Edwards Notation-FEN:
 r1bQ4/pp1p4/2k3p1/4pp2/8/4B3/q4PP1/1N2KB2 w - -

Game & Answer

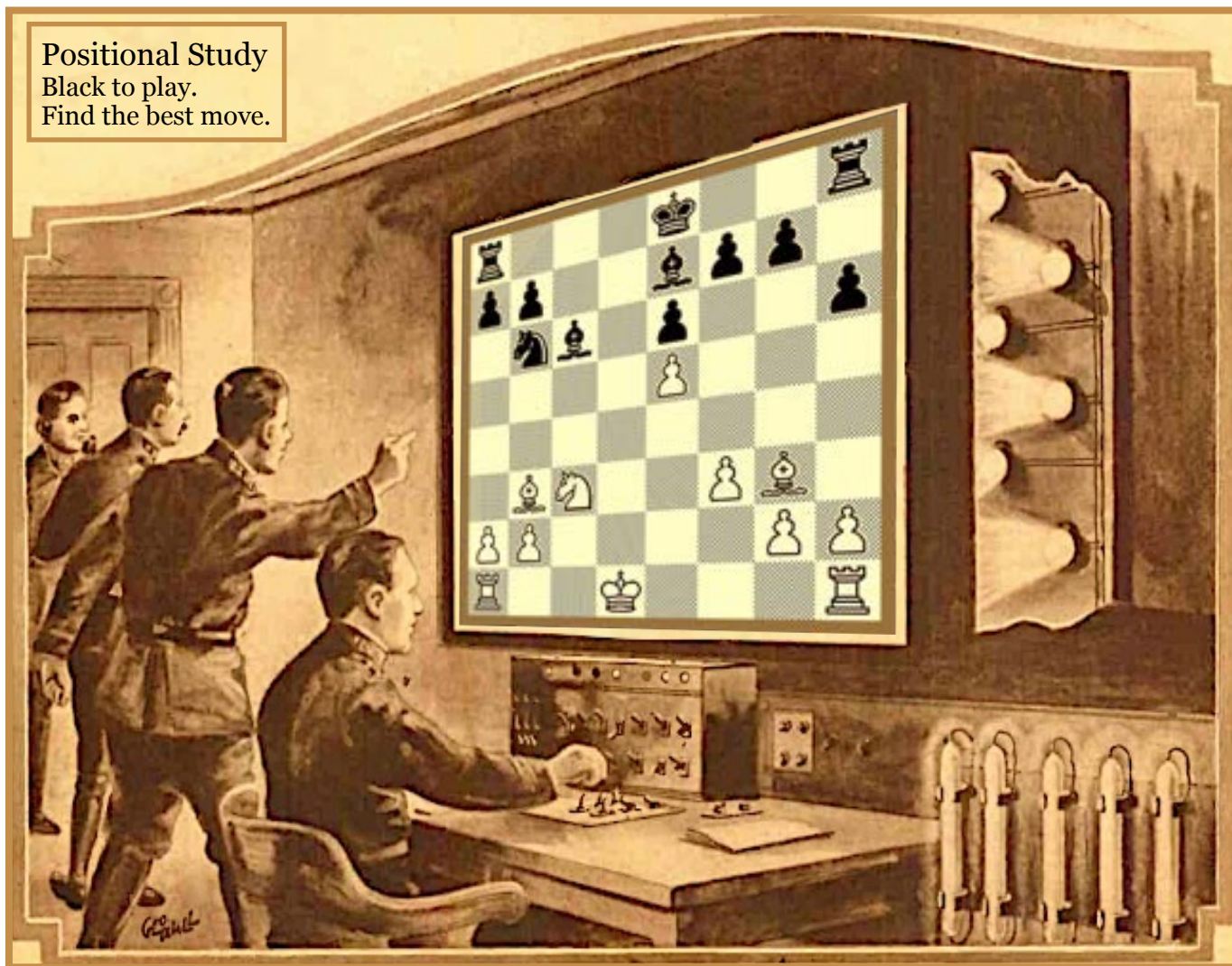


Text Answer



When viewing in PDF click the link below for the complete game.
<http://mid-southchessadvocate.blogspot.com/2022/09/carlos-sims-vs-falilou-keita-game-answer.html>

Positional Study
Black to play.
Find the best move.



White: Steve Perry
Black: NM Graham Horobetz
Event: John Hurt Memorial
Date: 05-14-2022, Round: 5 - 0-1

Positional Study: Black to play. Find the best move.

Forsyth-Edwards Notation-FEN:

r3k2r/pp2bpp1/1nb1p2p/4P3/8/1BN2PB1/PP4PP/R2K3R b KQkq - 0 1

When viewing in PDF click the link below or scan QR Codes.

<http://mid-southchessadvocate.blogspot.com/2022/09/steve-perry-vs-graham-horobetz-chess.html>

Game & Answer

Text Answer





Oran Quintrell Memorial
Memphis Chess Club
 195 Madison Ave.

09/12/2022, Round 1

White: Michael Robertson - 1816
 Black: Greg Turner - 1945

Scotch Game

1.e4 e5 2.Nf3 Nc6



3.d4 exd4 4.Bc4 d6



4...Nf6 5.e5 d5 6.Bb5 These are the normal lines of this opening.



When I face 4...d6 or 4...h6, I play Nxd4 getting my pawn back and turning it into a normal Scotch where black has played a sub-optimal 4th move.

Another possibility is 4...Bc5 5.c3 Nf6 6.cxd4 Bb4+



or 4...Bb4+



5.Nxd4 Nxd4 6.Qxd4 Be6



7.Nc3 Nf6 8.Bg5



8.Bf4 Be7 9.O-O-O is another option that could be looked at.



8...Be7 9.O-O O-O



10.Rad1 h6 11.Bc1



The last move requires explanation. I would like to play Nd5, once the knights trade off, there is a possible Bf6 for my opponent. Bc1 covers the b2 square. There may also be lines of Bb2 in the future as well. Plus I liked doing something other than the normal Bh4 move.



11...b6



This move opens up light squares on the queenside, but it prevents me from playing f4.

12.Nd5



12.f4? d5 13.exd5 Bc5



12...Nxd5 13.exd5 Bf5



14.Bb3 Bg5 15.Ba4 a6



16.Bc6 Rb8



16...Bxc2 17.Bxg5 Qxg5 18.Rc1 is where his Bishop and Rook are both under attack.



17.c4 Bf6 18.Qf4? This move costs me the Exchange.



18...Bc2!



Now I have to choose which Bishop I want for my Rook. I chose his light squared Bishop so my Bishop on c6 couldn't be opposed.

19.Qg4 Bxd1 20.Rxd1 Bg5



21.f4



What little resources I have lie in the Bishop pair and blocking lines for his Rooks. I felt like I had to keep them on the board.

21...Bf6 22.a4!?



22.Re1 It may have been better to claim the open file first, but I wanted to clamp down the queenside pawns first.



22...b5 23.b3 bxc4 24.bxc4



22...Qe7 23.Qf3



I'm trying to keep the Queen out of e4.



23...g6 24.b3 Bg7



25.Bd2 f5 26.Re1 Qf6



27.Kh1



27.h3 Qd4+ 28.Be3 Qc3



29.Rb1 Qc2



29...Bd4



Once his queen comes in, it can cause me a lot of hassle. I wanted to prepare for this as best I could.



27...Rf7 28.Re6 Qa1+



29.Be1 Bf6 30.Qe3 Kg7



30...Bd4 31.Rxg6+ Kh7



31...Rg7 32.Qe6+



31.g3 Qd4 32.Qe2 Qb2



33.Qd3 Bd4 34.Re2 Qa1



35.Kg2 Bf6 36.Re6 Qd4



37.Qf3 Kf8 38.Bf2 Qb2



39.Re2 Qc3 40.Re3 Qa1



41.Re1 Qa3



My opponent does not want a draw by repetition. I can't blame him.

42.Re6 Kg7 43.h4 Re7



Finally contesting the file, but I can contest the diagonal!

44.Rxe7+ Bxe7 45.Bd4+ Bf6



46.Bxf6+ Kxf6 47.Qc3+ Kf7



47...Ke7? 48.Qg7+



48.Bd7 Qa2+ 49.Kh3 g5



49...Re8! The only move that does not lose. I had calculated this line and didn't know if he would play it or not, I also didn't know this was the only move that worked until reviewing this with an engine.



50.Bxe8+ Kxe8 51.Qh8+ Kd7



52.Qxh6 Qb1 53.Kg2 Qb2+



54.Kh3 Qb1



50.Be6+ Kg6 51.h5+!



I was happy to have found this idea. There was a crowd starting to appear and we were low on time. A very tense situation.

51...Kh7 52.Bxf5+ Kg8



53.Be6+ Kh7 54.fxg5 hxg5



The next few Queen moves were to gain a bit of time. I was down to under a minute, and with every move I gained 30 seconds.

55.Qd3+ Kh8 56.Qd4+ Kh7



57.Qe4+ Kh8 58.Qg6 g4+ 59.Bxg4!
The only move that keeps my advantage!



Other moves of interest 59.Qxg4 Qa1



or 59.Kxg4 Qe2+.

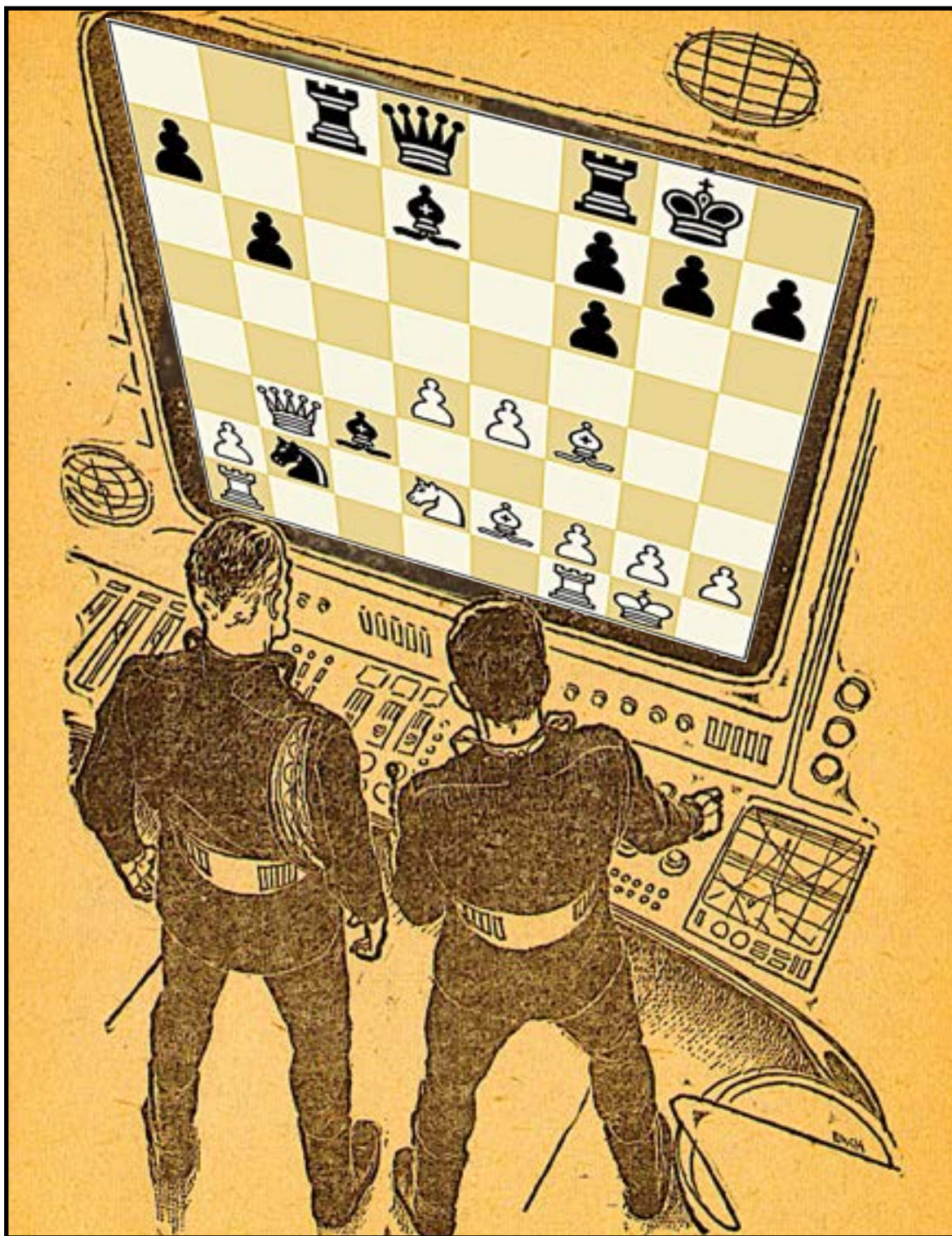


59...Qd2 60.Bf5 1-0



My opponent resigned here. A tough fought game by both of us.





White: Dane B. Zaglar
 Black: Carlos Sims
 Event: Memphis Chess League 2 - Danes vs Memphis
 Date: 02-10-2022, Match
 Black to move with advantage.
 Forsyth-Edwards Notation-FEN:
 2rq1rk1/p2b1ppp/1p3p2/8/3PPB2/1Qb5/Pn1NBPPP/R4RK1 b - -

Game & Answer



Text Answer

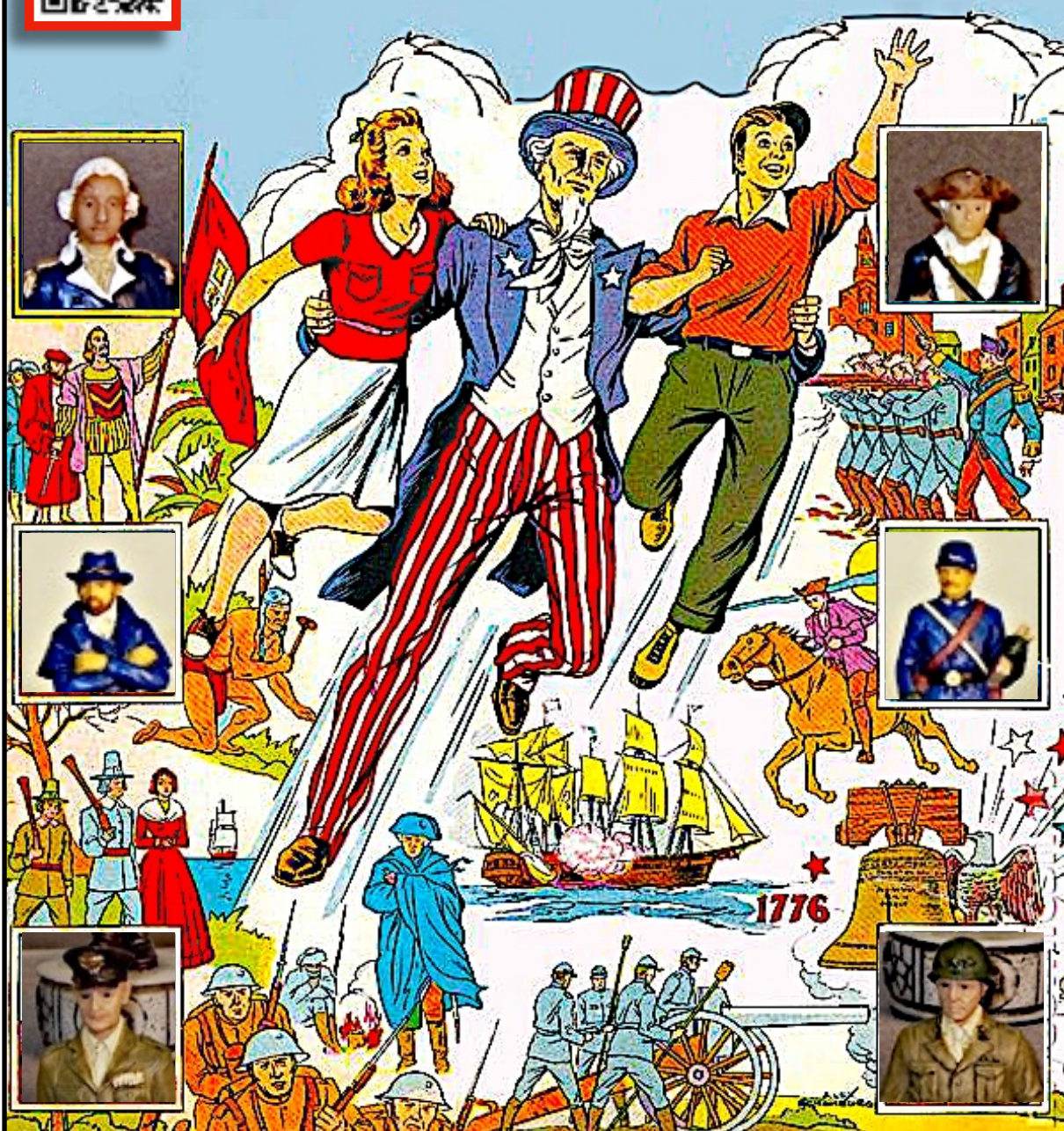


When viewing in PDF click the link below for the complete game.
<http://mid-southchessadvocate.blogspot.com/2022/09/dane-b-zaglar-vs-carlos-sims-match.html>

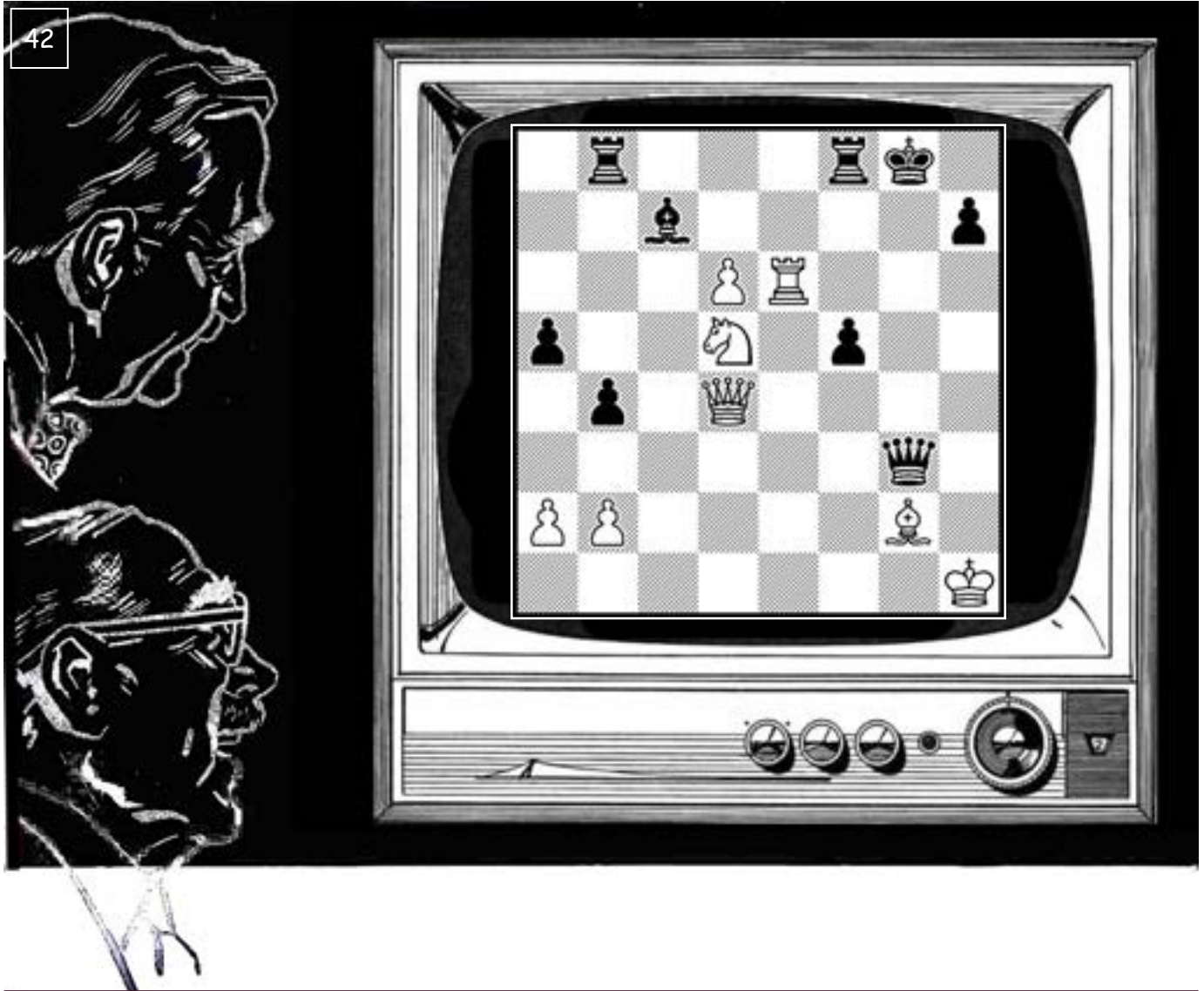
Themed Chess Pieces



ChessCentral.com



Here we have gathered the finest chess pieces each designed around a special theme. Keep an eye on this themed chess section, as we will be adding more finely crafted chess pieces to fire your imagination!



White: NM Graham Horobetz

Black: Douglas Stewart

Event: John Hurt Memorial

Date: 05-14-2022, Round: 3 - 1-0

White to move & checkmate in 4.

Forsyth-Edwards Notation-FEN:

1r3rk1/2b4p/3PR3/p2N1p2/1p1Q4/6q1/PP4B1/7K w KQkq - 0 1

When viewing in PDF click the link below or scan QR Codes.

<http://mid-southchessadvocate.blogspot.com/2022/09/graham-horobetz-vs-douglas-stewart-game.html>

Game & Answer



Text Answer



BACK ISSUES

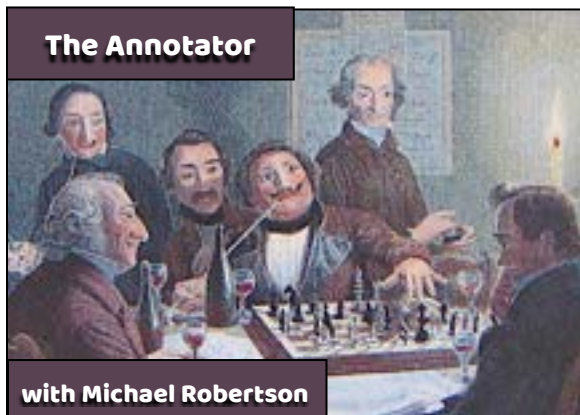
Source #1



Source #2



Back Issues: Click HTML below when reading in PDF or Scan QR Codes
<https://www.chesscentral.com/pages/learn-chess-play-better/chess-advocate.html>



with Michael Robertson

ORAN QUINTRELL MEMORIAL
08/13/2022, Round 2

White: Michael Robertson - 1816
Black: Graham Horobetz - 2340

The Alapin Sicilian

1.e4 c5 2.c3



The Alapin Sicilian. I have been getting good positions out of this opening and I believe it's a good sideline to get away from tons of mainline Sicilian theory.

2...Nf6 3.e5 Nd5



4.d4 cxd4 5.cxd4 d6



6.Nf3 Nc6 7.Nc3!?



Not the best line, but I have got into interesting positions from here.

7...dxe5



7...Nxc3?! 8.bxc3 dxe5



9.d5 e4 10.Ng5 Ne5



10...Nb8 is more common.



11.Bb5+ Bd7 12.Rb1



11.Nxe4



11.Qd4



11.Bf4



8.dxe5 Nxc3 9.Qxd8+ Nxd8



10.bxc3 Bd7 11.Bd3 Bc6



12.Rb1 Rc8 13.Nd4!?



Sacking the pawn for activity.

13...Bxg2 14.Rg1 Bd5



15.Bb5+ Nc6 16.c4 Be4



17.Rb3 a6 18.Bxc6+ bxc6



19.e6



This move may not be the best line, but it's fun attacking chess!

19.f3 Bg6 20.c5 e6



19...c5 20.exf7+ Kxf7



21.Nf3 Kg8 22.Ng5



22.Ne5 g6 23.h4 Bg7 24.Bb2



22...Bf5 23.Bb2 Rc6



24.Nf3 Rg6 25.Rg3 Rxc3



26.hxg3



26.fxg3 h5 27.Bc1



26...h5!



Getting his rook into play. I had not considered this move at the time.



27.Bc1



Restraining Rh6.

27.Rb6 Rh6



27...Be6 28.Ne5 h4



29.gxh4 Rxh4 30.Be3 Re4



31.f4??



A bad move, but we both overlooked the continuation:

31...g5



31...Bxc4



32.Nxc4 Rxc4 33.Ra3 Re4



34.Kd2 c4 35.Rxa6 e5



36.Re6



This is the only move to hold my Bishop.

36...Bb4+ 37.Ke2 Kf7



38.Rxe5 Rxe5 39.fxe5 Ke6



40.Bd4 Kd5 41.Ke3?!



I felt like this move was required from me. It locks in my Bishop and I was not sure if I could hold a draw at this point or not.

41...g5 42.a4 Ba5! 43.Bb2



43.e6!! My only chance to hold it. I looked at this move briefly, and dismissed it just as quick. I had no idea this would be my way to a draw.



43...Kxe6 44.Ke4



43...c3 44.Bc1 Kxe5



45.Kf3 Kf5 46.Kg3 c2



47.Kf3 Bc7 48.Bb2 Bf4 49.a5 g4+



50.Ke2 Ke4 51.a6 Be3 52.Bc1



Trying for one last trick.

52...Ba7 0-1



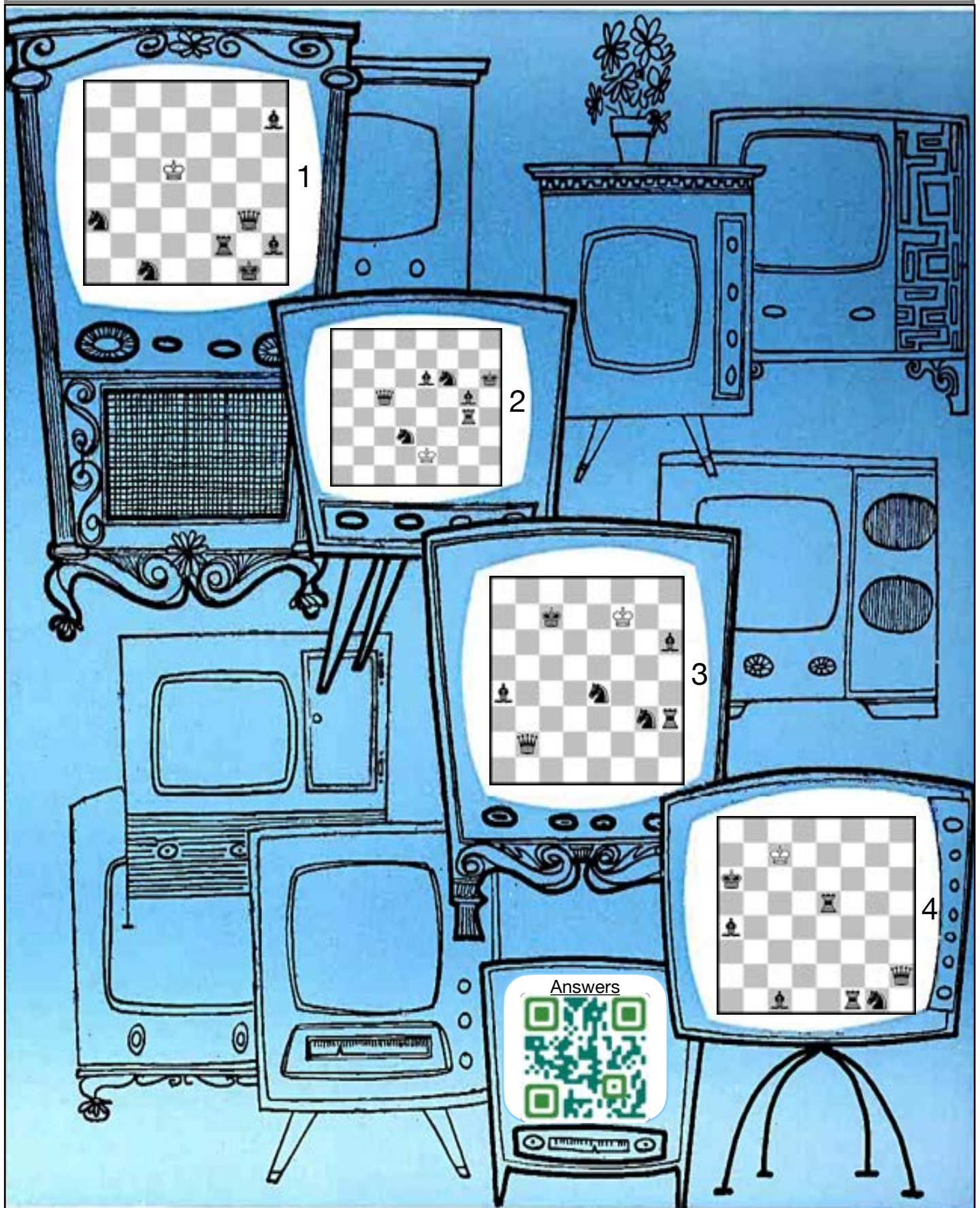
Well played by my opponent.

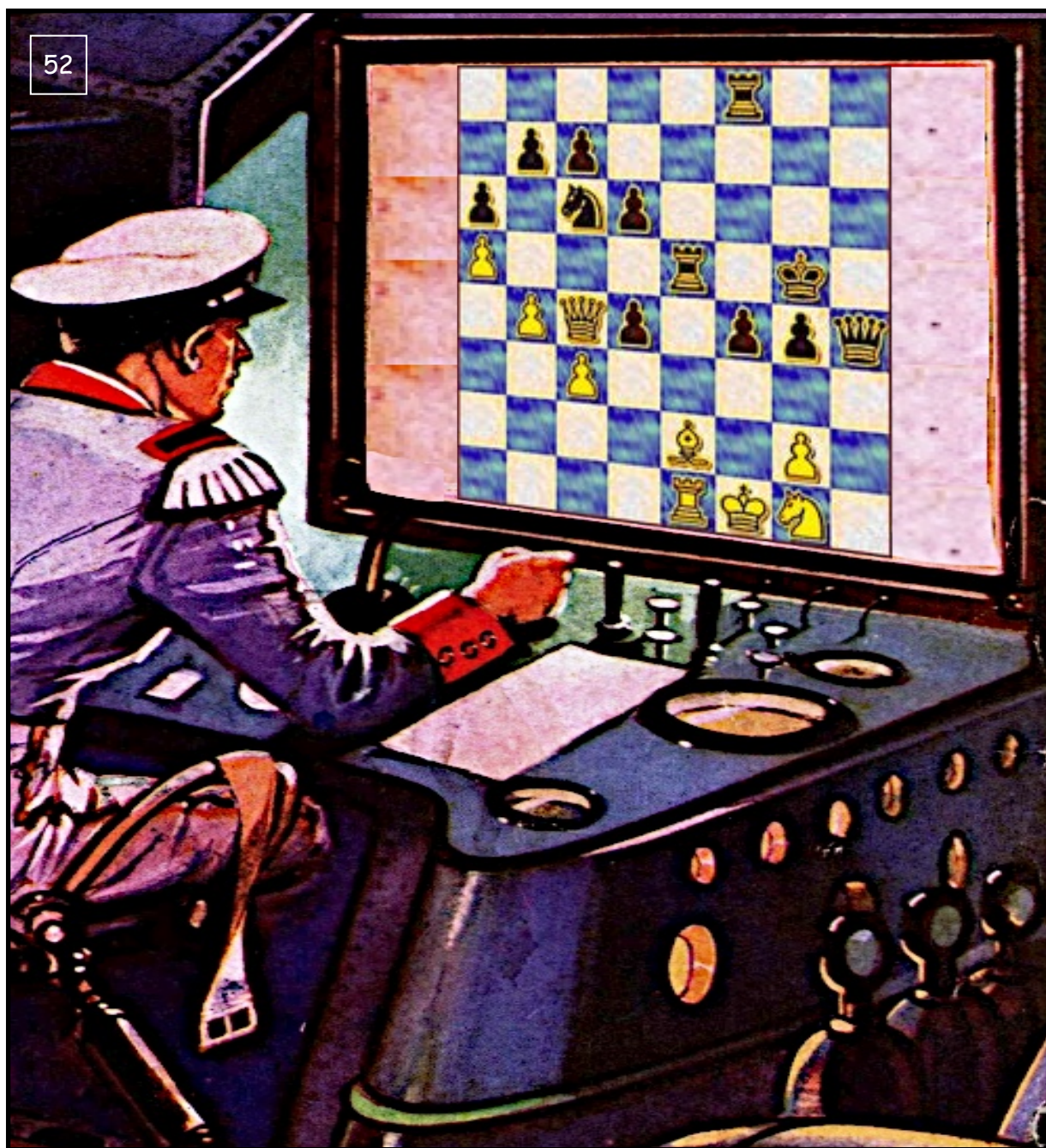


Avoid Checkmate in One

51

Move the White King to a Square Escaping Checkmate With Black's Next Move





White: Michael Robertson

Black: Carlos Sims

Event: 2021 Peter Lahde Tennessee Open

Date: 10-17-2021, Round: 5 - 0/1

Black to move and gain advantage.

Forsyth-Edwards Notation-FEN:

5r2/1pp5/p1np4/P3r1k1/1PQp1ppq/2P5/4B1P1/4RKN1 b KQkq - 0 1

<http://mid-southchessadvocate.blogspot.com/2022/09/michael-robertson-vs-carlos-sims-01.html>

Game & Answer



Text Answer



MEMPHISCHESSCLUB.COM

